



**Water Monitoring Result at C7 - Windsor House  
Mid-Flood Tide**

Date	Time	Weather Condition	Sampling Depth m		Water Temperature °C			pH			Salinity ppt			DO Saturation %			DO mg/L			Turbidity NTU			Suspended Solids mg/L		
					Value	Average	Value	Average	Value	Average	Value	Average	Value	Average	Value	Average	Value	Average	Value	Average	Value	Average	Value	Average	
27/11/17	10:50	Cloudy	Middle	-	23.00	23.00	22.95	8.23	8.23	8.23	32.00	32.00	32.00	85.1	85.7	85.6	6.07	6.11	6.11	4.08	4.01	4.02	7	7.00	
	10:52		Middle	-	22.90	22.90		8.22	8.22		32.00	32.00		85.7	85.7		6.12	6.12		4.00	4.00		7		
29/11/17	15:50	Fine	Middle	-	24.70	24.70	24.35	8.24	8.24	8.24	32.05	32.05	32.04	86.8	87.2	86.6	6.00	6.02	5.98	5.20	5.20	5.17	12	11.00	
	15:52		Middle	-	24.00	24.00		8.24	8.24		32.03	32.03		87.2	85.3		6.02	5.89		5.16	5.13		10		
1/12/17	17:39	Fine	Middle	-	22.80	22.80	22.80	8.09	8.09	8.11	32.40	32.40	32.41	81.0	80.9	80.7	5.78	5.78	5.76	52.36	52.11	<u>51.93</u>	46	<u>45.50</u>	
	17:41		Middle	-	22.80	22.80		8.12	8.12		32.41	32.41		80.7	80.1		5.77	5.72		51.72	51.54		45		
4/12/17	15:50	Fine	Middle	-	23.10	23.10	23.10	8.28	8.28	8.28	32.30	32.20	32.23	90.9	89.8	90.4	6.47	6.41	6.44	9.44	9.31	<u>9.39</u>	21	<u>20.50</u>	
	15:52		Middle	-	23.10	23.10		8.28	8.28		32.21	32.21		90.4	90.6		6.43	6.44		9.37	9.44		20		
6/12/17	18:30	Cloudy	Middle	-	21.80	21.80	21.80	8.03	8.03	8.03	32.99	32.99	32.99	86.8	89.5	88.1	6.28	6.47	6.38	6.04	6.01	6.06	9	10.00	
	18:31		Middle	-	21.80	21.80		8.03	8.03		32.99	32.99		88.8	87.3		6.43	6.32		6.09	6.11		11		
9/12/17	10:45	Fine	Middle	-	21.30	21.30	21.25	8.31	8.31	8.32	32.17	32.17	32.17	86.8	87.0	86.7	6.38	6.40	6.38	8.44	8.86	8.76	13	12.50	
	10:47		Middle	-	21.20	21.20		8.32	8.32		32.17	32.17		86.4	86.7		6.35	6.37		8.87	8.87		12		
12/12/17	11:35	Fine	Middle	-	21.70	21.70	21.70	8.23	8.23	8.23	32.21	32.21	32.21	85.3	85.8	85.8	6.22	6.26	6.25	2.47	2.49	2.49	2	2.00	
	11:00		Middle	-	21.70	21.70		8.23	8.23		32.21	32.21		86.6	85.5		6.27	6.23		2.50	2.50		2		
14/12/17	14:50	Fine	Middle	-	21.30	21.30	21.30	8.35	8.35	8.35	32.23	32.23	32.23	92.6	92.2	92.2	6.80	6.77	6.77	8.95	8.97	8.98	6	7.00	
	14:52		Middle	-	21.30	21.30		8.35	8.35		32.23	32.23		92.3	91.8		6.75	6.74		8.99	8.99		8		
16/12/17	16:05	Fine	Middle	-	20.20	20.20	20.15	8.35	8.35	8.35	32.10	32.10	32.13	89.5	90.0	89.9	6.73	6.77	6.76	22.71	22.78	<u>22.80</u>	31	<u>29.50</u>	
	16:07		Middle	-	20.10	20.10		8.35	8.35		32.15	32.15		89.9	90.0		6.76	6.78		22.80	22.91		28		
19/12/17	8:40	Fine	Middle	-	18.70	18.70	18.60	8.34	8.34	8.35	32.20	32.20	32.21	81.9	84.8	84.4	6.32	6.55	6.52	10.08	10.11	<u>10.12</u>	11	10.00	
	8:42		Middle	-	18.50	18.50		8.36	8.36		32.22	32.22		85.2	85.6		6.58	6.62		10.18	10.10		9		
21/12/17	8:20	Fine	Middle	-	18.50	18.50	18.55	8.33	8.33	8.34	32.36	32.36	32.36	93.9	93.4	93.5	7.25	7.21	7.22	8.56	8.56	8.56	2	2.00	
	8:22		Middle	-	18.60	18.60		8.34	8.34		32.36	32.36		93.4	93.4		7.21	7.21		8.55	8.55		2		
23/12/17	8:15	Cloudy	Middle	-	20.60	20.60	20.60	8.08	8.08	8.10	32.70	32.70	32.70	96.1	96.3	96.0	7.13	7.14	7.12	6.59	6.61	6.68	6	6.50	
	8:17		Middle	-	20.60	20.60		8.11	8.11		32.70	32.70		96.1	95.4		7.12	7.07		6.75	6.76		7		
26/12/17	12:52	Cloudy	Middle	-	19.50	19.50	19.50	8.15	8.15	8.15	32.48	32.48	32.48	85.5	86.1	86.1	6.49	6.53	6.53	2.93	2.79	2.79	<2	3.00	
	12:53		Middle	-	19.50	19.50		8.15	8.15		32.48	32.48		86.0	86.7		6.53	6.58		2.72	2.70		3		

Remarks:  
Single underline denotes exceedance over Action Level.  
Double underline denotes exceedance over Limit Level.



**Water Monitoring Result at C1 - HKCEC Extension  
Mid-Flood Tide**

Date	Time	Weather Condition	Sampling Depth		Water Temperature			pH			Salinity			DO Saturation		DO		Turbidity		Suspended Solids				
					°C			-			ppt			%		mg/L		NTU		mg/L				
			m	Value	Average	Value	Average	Value	Average	Value	Average	Value	Average	Value	Average	Value	Average	Value	Average	Value	Average			
27/11/17	14:40	Cloudy	Middle	3.0	22.40	22.40	22.40	8.30	8.30	8.30	32.40	32.40	32.40	86.3	84.0	85.9	6.20	6.08	6.19	6.12	6.33	6.29	7	8.00
	14:42		Middle	3.0	22.40	22.40		8.30	8.30		32.40	32.40		86.4	86.9		6.21	6.25		6.37	6.35		9	
29/11/17	14:50	Fine	Middle	3.0	23.30	23.30	23.20	8.26	8.26	8.27	32.34	32.34	32.34	87.2	87.7	87.4	6.17	6.21	6.19	5.64	5.64	5.57	4	3.50
	14:52		Middle	3.0	23.10	23.10		8.27	8.27		32.34	32.34		87.4	87.4		6.18	6.18		5.58	5.40		3	
1/12/17	17:01	Fine	Middle	3.5	22.40	22.40	22.40	8.03	8.02	8.02	32.60	32.61	32.61	69.7	69.2	71.6	5.00	4.97	5.03	9.03	9.00	8.94	8	7.50
	17:03		Middle	3.5	22.40	22.40		8.02	8.02		32.62	32.62		77.2	70.2		5.11	5.03		8.80	8.94		7	
4/12/17	17:40	Fine	Middle	3.0	22.40	22.40	22.35	8.28	8.28	8.28	32.32	32.32	32.32	83.4	83.7	83.8	6.01	6.03	6.03	6.14	6.12	6.14	5	5.50
	17:42		Middle	3.0	22.30	22.30		8.27	8.27		32.32	32.32		84.0	83.9		6.05	6.04		6.14	6.17		6	
6/12/17	20:12	Cloudy	Middle	3.0	21.40	21.40	21.40	8.19	8.19	8.20	33.04	33.04	33.04	93.0	93.2	92.3	6.79	6.81	6.74	7.43	7.40	7.39	10	9.00
	20:13		Middle	3.0	21.40	21.40		8.20	8.20		33.04	33.04		91.8	91.0		6.70	6.64		7.38	7.36		8	
9/12/17	12:10	Fine	Middle	3.0	20.30	20.30	20.20	8.30	8.30	8.30	32.45	32.45	32.41	86.0	86.1	86.2	6.43	6.44	6.45	6.65	6.65	6.64	7	7.50
	12:12		Middle	3.0	20.10	20.10		8.30	8.30		32.47	32.27		86.2	86.4		6.45	6.46		6.62	6.65		8	
12/12/17	15:25	Fine	Middle	3.0	20.60	20.60	20.60	8.30	8.30	8.30	32.46	32.46	32.46	88.7	88.8	88.7	6.59	6.60	6.59	5.35	5.58	5.35	5	5.50
	15:27		Middle	3.0	20.60	20.60		8.30	8.30		32.45	32.45		88.4	88.9		6.57	6.60		5.24	5.22		6	
14/12/17	16:40	Fine	Middle	3.0	20.40	20.40	20.45	8.35	8.35	8.36	31.55	32.55	32.31	92.2	92.2	92.2	6.86	6.86	6.86	7.04	7.14	7.16	4	4.00
	16:42		Middle	3.0	20.50	20.50		8.36	8.36		32.56	32.56		92.4	91.9		6.88	6.84		7.21	7.23		4	
16/12/17	15:35	Fine	Middle	3.0	19.40	19.40	19.35	8.34	8.34	8.34	32.26	32.26	33.50	89.2	89.5	89.2	6.79	6.81	6.81	5.65	5.56	5.54	4	4.50
	15:37		Middle	3.0	19.30	19.30		8.34	8.34		37.24	32.24		89.3	88.9		6.86	6.77		5.46	5.47		5	
19/12/17	7:56	Fine	Middle	3.5	17.20	17.20	17.20	8.39	8.39	8.39	32.42	32.42	32.42	87.5	86.9	86.4	6.92	6.81	6.70	11.31	11.25	11.23	8	8.50
	7:58		Middle	3.5	17.20	17.20		8.39	8.39		32.42	32.42		86.1	85.2		6.82	6.24		11.19	11.16		9	
21/12/17	10:35	Fine	Middle	3.0	17.70	17.70	17.70	8.37	8.37	8.37	32.33	32.33	32.34	91.2	91.8	91.7	7.16	7.20	7.21	8.97	8.99	8.97	6	5.00
	10:37		Middle	3.0	17.70	17.70		8.37	8.37		32.34	32.34		91.9	91.9		7.21	7.26		8.97	8.96		4	
23/12/17	9:55	Cloudy	Middle	3.0	18.30	18.30	18.30	8.29	8.29	8.29	32.83	32.83	32.83	93.4	93.4	93.3	7.22	7.22	7.21	8.82	8.91	8.89	8	7.50
	9:57		Middle	3.0	18.30	18.30		8.29	8.29		32.83	32.83		93.2	93.0		7.21	7.19		8.94	8.87		7	
26/12/17	10:25	Cloudy	Middle	2.5	18.00	18.00	18.00	8.21	8.21	8.21	32.73	32.73	32.73	86.6	86.3	86.3	6.77	6.75	6.75	6.37	6.28	6.23	6	7.00
	10:26		Middle	2.5	18.00	18.00		8.21	8.21		32.73	32.73		86.5	85.7		6.76	6.70		6.15	6.12		8	

Remarks:  
Single underline denotes exceedance over Action Level.  
Double underline denotes exceedance over Limit Level.



**Water Monitoring Result at P1 - HKCEC Phase I  
Mid-Flood Tide**

Date	Time	Weather Condition	Sampling Depth		Water Temperature			pH			Salinity			DO Saturation		DO		Turbidity		Suspended Solids				
					°C		-		ppt		%		mg/L		NTU		mg/L							
			m	Value	Average	Value	Average	Value	Average	Value	Average	Value	Average	Value	Average	Value	Average	Value	Average	Value	Average			
27/11/17	14:15	Cloudy	Middle	3.0	22.90	22.90	22.95	8.29	8.29	8.29	32.44	32.44	32.45	88.2	88.3	87.3	6.28	6.29	6.22	6.17	6.09	6.08	10	11.00
	14:17		Middle	3.0	23.00	23.00		8.28	8.28		32.45	32.45		85.0	87.8		6.05	6.24		6.04	6.03		12	
29/11/17	14:30	Fine	Middle	3.0	24.10	24.10	24.15	8.24	8.24	8.25	32.39	32.39	32.39	90.6	90.6	90.6	6.31	6.31	6.31	5.54	5.54	5.58	7	8.00
	14:32		Middle	3.0	24.20	24.20		8.25	8.25		32.39	32.39		90.8	90.5		6.33	6.30		5.58	5.65		9	
1/12/17	16:43	Fine	Middle	3.5	23.10	23.10	23.10	7.86	7.85	7.86	32.70	32.70	32.70	73.8	72.7	73.0	5.22	5.15	5.17	6.59	6.60	6.60	3	3.00
	16:47		Middle	3.5	23.10	23.10		7.86	7.86		32.70	32.71		73.5	72.0		5.20	5.10		6.60	6.61		3	
4/12/17	17:20	Fine	Middle	3.0	22.50	22.50	22.55	8.25	8.25	8.26	32.46	32.46	32.46	89.8	90.2	90.0	6.45	6.47	6.46	6.06	6.00	6.03	7	7.00
	17:25		Middle	3.0	22.60	22.60		8.27	8.27		32.46	32.46		90.0	89.9		6.46	6.45		6.02	6.03		7	
6/12/17	19:47	Cloudy	Middle	3.0	20.50	20.50	20.50	8.26	8.26	8.27	33.05	33.05	33.05	94.5	94.9	94.4	7.00	7.03	6.99	5.10	5.08	5.07	9	7.50
	19:48		Middle	3.0	20.50	20.50		8.27	8.27		33.04	33.04		94.1	94.0		6.97	6.96		5.06	5.02		6	
9/12/17	11:50	Fine	Middle	3.0	20.00	20.00	19.95	8.29	8.29	8.29	32.48	32.48	32.49	88.6	88.7	88.2	6.68	6.67	6.64	7.54	7.54	7.50	10	10.50
	11:52		Middle	3.0	19.90	19.90		8.29	8.29		32.49	32.49		88.0	87.4		6.62	6.58		7.46	7.44		11	
12/12/17	15:05	Fine	Middle	3.0	21.30	21.30	21.40	8.27	8.27	8.27	32.44	32.44	32.44	89.2	89.9	89.3	6.53	6.57	6.53	4.24	4.19	4.14	9	9.00
	15:07		Middle	3.0	21.50	21.50		8.27	8.27		32.44	32.44		89.0	89.0		6.51	6.51		4.06	4.07		9	
14/12/17	16:20	Fine	Middle	3.0	20.80	20.80	20.85	8.32	8.32	8.32	32.54	32.54	32.54	92.0	93.5	92.6	6.87	6.91	6.87	4.87	4.75	4.78	3	3.00
	16:22		Middle	3.0	20.90	20.90		8.32	8.32		32.54	32.54		92.9	92.0		6.87	6.81		4.75	4.74		3	
16/12/17	15:15	Fine	Middle	3.0	19.70	19.70	19.70	8.34	8.34	8.34	32.42	32.42	32.42	90.6	90.7	90.3	6.84	6.84	6.81	5.25	5.12	5.12	5	4.50
	15:17		Middle	3.0	19.70	19.70		8.34	8.34		32.41	32.41		90.1	89.7		6.81	6.75		5.07	5.04		4	
19/12/17	7:40	Fine	Middle	3.5	17.50	17.50	17.50	8.35	8.35	8.35	32.35	32.35	32.36	83.5	84.3	84.2	6.57	6.64	6.63	13.36	13.27	<u>12.96</u>	10	9.50
	7:42		Middle	3.5	17.50	17.50		8.35	8.35		32.36	32.36		84.3	84.8		6.64	6.67		13.11	12.11		9	
21/12/17	10:15	Fine	Middle	3.0	17.60	17.60	17.60	8.32	8.32	8.33	32.33	32.33	32.33	90.0	90.4	90.2	7.08	7.11	7.09	9.57	9.40	<u>9.40</u>	6	6.00
	10:17		Middle	3.0	17.60	17.60		8.33	8.33		32.33	32.33		90.1	90.2		7.08	7.10		9.32	9.31		6	
23/12/17	9:35	Cloudy	Middle	3.0	18.60	18.60	18.75	8.21	8.21	8.23	32.86	32.86	32.86	91.1	90.4	90.7	6.96	6.91	6.93	8.88	8.88	8.88	9	8.50
	9:37		Middle	3.0	18.90	18.90		8.24	8.24		32.85	32.85		90.4	90.8		6.91	6.94		8.87	8.87		8	
26/12/17	9:51	Cloudy	Middle	2.5	18.20	18.20	18.20	8.26	8.26	8.26	32.76	32.76	32.76	88.1	88.7	88.3	6.82	6.87	6.84	4.79	4.74	4.68	9	8.50
	9:52		Middle	2.5	18.20	18.20		8.26	8.26		32.76	32.76		88.6	87.6		6.86	6.79		4.60	4.58		8	

Remarks:  
Single underline denotes exceedance over Action Level.  
Double underline denotes exceedance over Limit Level.



**Water Monitoring Result at P3 - APA  
Mid-Flood Tide**

Date	Time	Weather Condition	Sampling Depth		Water Temperature			pH			Salinity			DO Saturation			DO			Turbidity			Suspended Solids	
					°C		-		ppt		%		mg/L		NTU		mg/L							
			m	Value	Average	Value	Average	Value	Average	Value	Average	Value	Average	Value	Average	Value	Average	Value	Average	Value	Average	Value	Average	
27/11/17	14:20	Cloudy	Middle	3.0	22.50	22.50	22.50	8.28	8.28	8.28	32.40	32.40	32.40	87.2	88.1	87.8	6.26	6.31	6.29	4.44	4.41	4.43	6	5.50
	14:22		Middle	3.0	22.50	22.50	22.50	8.27	8.27	8.27	32.39	32.39	32.40	87.7	88.0	87.8	6.29	6.31	6.29	4.39	4.49	4.43	5	
29/11/17	14:35	Fine	Middle	3.0	23.50	23.50	23.55	8.25	8.25	8.25	32.39	32.39	32.34	86.7	87.2	87.1	6.11	6.14	6.13	5.42	5.25	5.35	5	4.50
	14:37		Middle	3.0	23.60	23.60	23.55	8.25	8.25	8.25	32.28	32.28	32.34	87.4	87.0	87.1	6.15	6.13	6.13	5.32	5.40	5.35	4	
1/12/17	16:49	Fine	Middle	3.5	22.70	22.70	22.75	7.94	7.94	7.94	32.61	32.61	32.61	71.6	70.0	71.1	5.11	5.07	5.10	6.51	6.46	6.47	4	4.00
	16:51		Middle	3.5	22.80	22.80	22.75	7.94	7.94	7.94	32.61	32.61	32.61	71.7	71.1	71.1	5.12	5.08	5.10	6.46	6.46	6.47	4	
4/12/17	17:25	Fine	Middle	3.0	22.30	22.30	22.30	8.28	8.28	8.28	32.41	32.41	32.41	86.3	86.0	86.3	6.21	6.19	6.21	5.52	5.47	5.48	9	8.00
	17:27		Middle	3.0	22.30	22.30	22.30	8.28	8.28	8.28	32.41	32.41	32.41	86.5	86.4	86.3	6.23	6.22	6.21	5.52	5.42	5.48	7	
6/12/17	19:53	Cloudy	Middle	3.0	20.80	20.80	16.12	8.25	8.25	8.25	33.07	33.07	33.07	95.2	95.0	94.3	7.02	7.00	6.95	5.97	5.99	5.81	7	6.50
	19:54		Middle	3.0	20.80	2.08	16.12	8.25	8.25	8.25	33.07	33.07	33.07	93.0	93.8	94.3	6.84	6.92	6.95	5.67	5.62	5.81	6	
9/12/17	11:55	Fine	Middle	3.0	19.80	19.80	19.75	8.29	8.29	8.29	32.48	32.48	32.49	85.4	85.4	85.5	6.44	6.44	6.20	7.04	7.15	7.13	10	10.00
	11:57		Middle	3.0	19.70	19.70	19.75	8.29	8.29	8.29	32.49	32.49	32.49	85.6	85.7	85.5	6.46	5.47	6.20	7.17	7.17	7.13	10	
12/12/17	15:10	Fine	Middle	3.0	20.80	20.80	20.80	8.28	8.28	8.29	32.41	32.41	32.41	89.9	90.0	90.0	6.66	6.66	6.66	4.21	4.18	4.17	2	2.00
	15:12		Middle	3.0	20.80	20.80	20.80	8.29	8.29	8.29	32.41	32.41	32.41	89.9	90.1	90.0	6.66	6.67	6.66	4.15	4.14	4.17	2	
14/12/17	16:25	Fine	Middle	3.0	20.70	20.70	20.70	8.33	8.33	8.33	32.52	32.52	32.52	89.8	89.6	89.4	6.66	6.65	6.63	4.16	4.16	4.16	2	2.00
	16:27		Middle	3.0	20.70	20.70	20.70	8.33	8.33	8.33	32.52	32.52	32.52	89.1	89.2	89.4	6.60	6.61	6.63	4.16	4.17	4.16	2	
16/12/17	15:20	Fine	Middle	3.0	19.50	19.50	19.45	8.34	8.34	8.34	32.21	32.21	32.22	88.1	89.7	89.1	6.68	6.81	6.77	5.64	5.54	5.64	5	4.50
	15:22		Middle	3.0	19.40	19.40	19.45	8.34	8.34	8.34	32.22	32.22	32.22	89.0	89.7	89.1	6.78	6.80	6.77	5.70	5.68	5.64	4	
19/12/17	7:44	Fine	Middle	3.5	17.50	17.50	17.45	8.36	8.36	8.36	32.37	32.37	32.37	86.0	85.4	85.3	6.78	6.73	6.72	11.26	11.24	11.24	6	7.00
	7:46		Middle	3.5	17.40	17.40	17.45	8.36	8.36	8.36	32.36	32.36	32.37	84.8	84.9	85.3	6.68	6.70	6.72	11.24	11.23	11.24	8	
21/12/17	10:20	Fine	Middle	3.0	17.40	17.40	17.40	8.35	8.35	8.35	32.30	32.30	32.31	89.8	90.0	89.8	7.09	7.10	7.09	8.91	8.91	8.91	5	5.00
	10:22		Middle	3.0	17.40	17.40	17.40	8.35	8.35	8.35	32.31	32.31	32.31	89.7	89.6	89.8	7.08	7.08	7.09	8.91	8.92	8.91	5	
23/12/17	9:40	Cloudy	Middle	3.0	18.50	18.50	18.50	8.25	8.25	8.26	32.81	32.81	32.81	89.2	89.2	89.2	6.88	6.88	6.88	8.86	8.89	8.85	8	8.00
	9:42		Middle	3.0	18.50	18.50	18.50	8.26	8.26	8.26	32.81	32.81	32.81	89.1	89.2	89.2	6.87	6.88	6.88	8.89	8.76	8.85	8	
26/12/17	9:57	Cloudy	Middle	2.5	18.00	18.00	18.05	8.23	8.23	8.23	32.77	32.77	32.77	89.2	89.7	89.3	6.96	7.00	6.97	6.77	6.53	6.42	6	6.00
	9:58		Middle	2.5	18.10	18.10	18.05	8.23	8.23	8.23	32.77	32.77	32.77	89.5	88.9	89.3	6.98	6.93	6.97	6.27	6.12	6.42	6	

Remarks:  
Single underline denotes exceedance over Action Level.  
Double underline denotes exceedance over Limit Level.



**Water Monitoring Result at P4 - SOC  
Mid-Flood Tide**

Date	Time	Weather Condition	Sampling Depth		Water Temperature			pH			Salinity		DO Saturation		DO		Turbidity		Suspended Solids					
					°C		-		ppt		%		mg/L		NTU		mg/L							
			m	Value	Average	Value	Average	Value	Average	Value	Average	Value	Average	Value	Average	Value	Average	Value	Average					
27/11/17	14:25	Cloudy	Middle	3.0	22.20	22.20	22.25	8.29	8.29	8.29	32.42	32.42	32.42	86.8	87.3	87.0	6.26	6.28	6.27	6.76	6.77	6.76	7	7.50
	14:27		Middle	3.0	22.30	22.30		8.29	8.29		32.42	32.42		87.3	86.7		6.29	6.25		6.76	6.76		8	
29/11/17	14:40	Fine	Middle	3.0	23.40	23.40	23.45	8.25	8.25	8.26	32.25	32.25	32.25	86.2	86.9	86.4	6.10	6.14	6.11	5.46	5.24	5.27	7	6.50
	14:42		Middle	3.0	23.50	23.50		8.26	8.26		32.24	32.24		86.6	86.0		6.12	6.08		5.17	5.22		6	
1/12/17	16:13	Fine	Middle	3.5	22.50	22.50	22.50	7.98	7.97	7.98	32.64	32.64	32.64	71.4	70.7	70.9	5.15	5.06	5.09	8.94	8.80	8.72	7	7.00
	16:15		Middle	3.5	22.50	22.50		7.99	7.98		32.64	32.64		71.1	70.5		5.09	5.05		8.57	8.57		7	
4/12/17	17:30	Fine	Middle	3.0	22.20	22.20	22.20	8.28	8.28	8.28	32.36	32.36	32.37	87.3	87.3	87.5	6.30	6.31	6.32	5.69	5.66	5.71	6	5.50
	17:32		Middle	3.0	22.20	22.20		8.28	8.28		32.38	32.38		87.7	87.6		6.33	6.33		5.72	5.75		5	
6/12/17	20:03	Cloudy	Middle	3.0	20.80	20.80	20.80	8.27	8.27	8.27	33.03	33.03	33.03	85.6	89.7	87.0	6.32	6.62	6.42	6.69	6.92	6.84	7	8.00
	20:04		Middle	3.0	20.80	20.80		8.27	8.27		33.03	33.03		87.2	85.3		6.44	6.31		6.82	6.94		9	
9/12/17	12:00	Fine	Middle	3.0	19.90	19.90	19.80	8.79	8.79	8.79	32.44	32.44	32.45	84.8	84.8	84.6	6.38	6.38	6.34	6.89	6.91	6.91	7	6.50
	12:02		Middle	3.0	19.70	19.70		8.79	8.79		32.45	32.45		84.7	84.1		6.38	6.23		6.91	6.91		6	
12/12/17	15:20	Fine	Middle	3.0	20.50	20.50	20.50	8.29	8.29	8.29	32.43	32.43	32.44	88.8	89.0	89.0	6.60	6.62	6.62	5.40	5.34	5.37	3	3.50
	15:22		Middle	3.0	20.50	20.50		8.29	8.29		32.44	32.44		89.1	89.1		6.63	6.63		5.36	5.37		4	
14/12/17	16:30	Fine	Middle	3.0	20.50	20.50	20.55	8.33	8.33	8.34	32.52	32.52	32.53	91.2	91.0	91.2	6.77	6.76	6.78	5.63	5.77	5.73	4	3.50
	16:32		Middle	3.0	20.60	20.60		8.34	8.34		32.54	32.54		91.5	91.2		6.80	6.77		5.75	5.75		3	
16/12/17	15:15	Fine	Middle	3.0	19.60	19.60	19.50	8.40	8.34	8.36	32.25	32.25	32.26	89.4	89.1	89.3	6.78	6.76	6.78	5.51	5.51	5.47	4	5.00
	15:17		Middle	3.0	19.40	19.40		8.34	8.34		32.26	32.26		89.3	89.3		6.78	6.78		5.45	5.42		6	
19/12/17	7:48	Fine	Middle	3.5	17.40	17.40	17.40	8.38	8.38	8.38	32.41	32.41	32.42	84.0	83.1	83.1	6.62	6.56	6.57	14.49	14.42	14.41	8	8.00
	7:50		Middle	3.5	17.40	17.40		8.38	8.38		32.42	32.42		83.3	82.1		6.57	6.53		14.38	14.35		8	
21/12/17	10:25	Fine	Middle	3.0	17.50	17.50	17.50	8.35	8.35	8.35	32.31	32.31	32.33	88.3	88.9	88.6	6.95	7.00	6.97	6.63	6.83	7.26	5	5.00
	10:27		Middle	3.0	17.50	17.50		8.35	8.35		32.35	32.35		88.3	88.7		6.95	6.99		6.81	8.76		5	
23/12/17	9:45	Cloudy	Middle	3.0	18.40	18.40	18.40	8.26	8.26	8.27	32.82	32.82	32.82	92.2	92.3	92.3	7.11	7.11	7.12	7.71	7.64	7.66	7	7.00
	9:47		Middle	3.0	18.40	18.40		8.27	8.27		32.82	32.82		92.6	92.2		7.15	7.11		7.64	7.65		7	
26/12/17	10:05	Cloudy	Middle	2.5	17.90	17.90	17.90	8.27	8.27	8.27	32.77	32.77	32.77	86.0	86.2	85.5	6.71	6.72	6.66	6.39	6.37	6.33	4	5.00
	10:06		Middle	2.5	17.90	17.90		8.27	8.27		32.77	32.77		85.4	84.2		6.65	6.56		6.29	6.26		6	

Remarks:  
Single underline denotes exceedance over Action Level.  
Double underline denotes exceedance over Limit Level.



**Water Monitoring Result at P5 - WCT / RT / IT  
Mid-Flood Tide**

Date	Time	Weather Condition	Sampling Depth		Water Temperature			pH			Salinity			DO Saturation			DO		Turbidity			Suspended Solids		
					°C		-		ppt		%		mg/L		NTU		mg/L							
			m	Value	Average	Value	Average	Value	Average	Value	Average	Value	Average	Value	Average	Value	Average	Value	Average	Value	Average			
27/11/17	14:30	Cloudy	Middle	3.0	22.40	22.40	22.40	8.29	8.29	8.29	32.42	32.42	32.42	87.5	87.6	87.4	6.30	6.30	6.29	7.24	7.55	7.43	7	8.00
	14:32		Middle	3.0	22.40	22.40		8.28	8.28		32.42	32.42		87.2	87.1		6.27	6.27		7.47	7.45		9	
29/11/17	14:45	Fine	Middle	3.0	23.30	23.30	23.35	8.26	8.26	8.26	32.29	32.29	32.29	87.1	87.4	87.4	6.16	6.18	6.18	5.85	5.89	5.91	5	5.00
	14:47		Middle	3.0	23.40	23.40		8.26	8.26		32.28	32.28		87.8	87.4		6.21	6.18		5.97	5.92		5	
1/12/17	16:57	Fine	Middle	3.5	22.50	22.50	22.50	8.00	8.01	8.01	32.64	32.64	32.64	71.1	70.2	70.7	5.10	5.03	5.07	9.45	9.45	<u>9.39</u>	8	8.50
	16:59		Middle	3.5	22.50	22.50		8.01	8.01		32.64	32.64		70.8	70.6		5.08	5.06		9.35	9.32		9	
4/12/17	17:35	Fine	Middle	3.0	22.30	22.30	22.50	8.28	8.28	8.28	32.39	32.39	32.40	87.3	86.7	87.0	6.29	6.25	6.27	5.87	5.76	5.74	7	8.00
	17:37		Middle	3.0	22.70	22.70		8.28	8.28		32.40	32.40		86.7	87.1		6.25	6.28		5.68	5.66		9	
6/12/17	20:08	Cloudy	Middle	3.0	21.10	21.10	21.10	8.27	8.27	8.27	33.06	33.06	33.06	88.3	89.2	88.3	6.48	6.54	6.48	7.62	7.67	7.64	6	7.50
	20:09		Middle	3.0	21.10	21.10		8.27	8.27		33.06	33.06		88.9	86.7		6.52	6.36		7.65	7.60		9	
9/12/17	12:05	Fine	Middle	3.0	20.20	20.20	20.10	8.29	8.29	8.30	32.45	32.45	32.47	86.7	87.0	86.9	6.50	6.52	6.52	6.76	6.74	6.75	6	7.00
	12:07		Middle	3.0	20.00	20.00		8.30	8.30		32.48	32.48		87.4	86.6		6.55	6.50		6.74	6.75		8	
12/12/17	15:20	Fine	Middle	3.0	20.60	20.60	20.60	8.29	8.29	8.29	32.46	32.46	32.46	86.7	87.1	86.9	6.45	6.47	6.46	6.09	6.06	5.99	8	7.50
	15:22		Middle	3.0	20.60	20.60		8.29	8.29		32.46	32.46		86.8	87.1		6.45	6.47		5.90	5.91		7	
14/12/17	16:35	Fine	Middle	3.0	20.40	20.40	20.50	8.35	8.35	8.35	32.55	32.55	32.50	91.8	92.2	92.0	6.83	6.86	6.85	6.67	6.72	6.62	4	4.00
	16:37		Middle	3.0	20.60	20.60		8.35	8.35		32.55	32.35		92.4	91.7		6.87	6.82		6.75	6.35		4	
16/12/17	15:30	Fine	Middle	3.5	19.60	19.60	19.50	8.34	8.34	8.35	32.30	32.30	32.31	89.5	90.0	89.6	6.79	6.83	6.80	5.73	5.68	5.68	4	4.50
	15:32		Middle	3.5	19.40	19.40		8.35	8.35		32.32	32.31		89.4	89.4		6.79	6.79		5.65	5.65		5	
19/12/17	7:53	Fine	Middle	3.5	17.70	17.70	17.65	8.38	8.38	8.38	32.42	32.42	32.43	82.8	82.9	82.5	6.50	6.51	6.48	14.33	14.52	<u>14.57</u>	10	10.00
	7:54		Middle	3.5	17.60	17.60		8.38	8.38		32.43	32.43		82.9	81.2		6.51	6.38		14.65	14.76		10	
21/12/17	10:30	Fine	Middle	3.0	17.70	17.70	17.65	8.36	8.36	8.37	32.37	32.37	32.37	90.4	90.3	90.3	7.10	7.09	7.09	9.67	9.87	<u>9.86</u>	5	5.00
	10:32		Middle	3.0	17.60	17.60		8.37	8.37		32.36	32.36		90.2	90.1		7.08	7.08		9.91	9.99		5	
23/12/17	9:50	Cloudy	Middle	3.0	18.30	18.30	18.30	8.28	8.28	8.28	32.82	32.82	32.82	92.7	93.4	93.0	7.16	7.22	7.19	8.03	8.11	8.08	7	6.50
	9:52		Middle	3.0	18.30	18.30		8.28	8.28		32.82	32.82		92.8	93.1		7.17	7.19		8.09	8.08		6	
26/12/17	10:11	Cloudy	Middle	2.5	18.00	18.00	18.05	8.27	8.27	8.27	32.76	32.76	32.76	85.4	85.5	85.6	6.66	6.67	6.68	6.98	6.93	6.93	9	7.50
	10:12		Middle	2.5	18.10	18.10		8.27	8.27		32.76	32.76		85.8	85.6		6.69	6.68		6.89	6.92		6	

Remarks:  
Single underline denotes exceedance over Action Level.  
Double underline denotes exceedance over Limit Level.



**Water Monitoring Result at RW21-P789 - GEC / CRB / SHK  
Mid-Flood Tide**

Date	Time	Weather Condition	Sampling Depth		Water Temperature			pH			Salinity			DO Saturation			DO		Turbidity			Suspended Solids		
					°C		-		ppt		%		mg/L		NTU		mg/L							
			m	Value	Average	Value	Average	Value	Average	Value	Average	Value	Average	Value	Average	Value	Average	Value	Average	Value	Average			
27/11/17	10:30	Cloudy	Middle	3.5	22.60	22.60	22.60	8.28	8.28	8.29	32.11	32.11	32.11	85.7	86.2	86.0	6.16	6.22	6.18	5.65	5.67	5.67	4	4.50
	10:32		Middle	3.5	22.60	22.60		8.29	8.29		32.11	32.11		86.0	85.9		6.18	6.17		5.68	5.66		5	
29/11/17	15:05	Fine	Middle	4.0	23.60	23.60	23.65	8.27	8.27	8.27	32.43	32.43	32.43	90.0	90.8	90.3	6.33	6.38	6.35	5.87	5.89	5.88	9	8.50
	15:07		Middle	4.0	23.70	23.70		8.27	8.27		32.43	32.43		90.2	90.3		6.34	6.35		5.89	5.88		8	
1/12/17	17:20	Fine	Middle	3.5	22.40	22.40	22.45	8.05	8.05	8.06	32.66	32.66	32.66	78.4	79.0	78.8	5.62	5.67	5.65	9.52	9.37	<u>9.35</u>	9	9.00
	17:22		Middle	3.5	22.50	22.50		8.06	8.06		32.65	32.65		79.1	78.7		5.67	5.65		9.35	9.17		9	
4/12/17	15:30	Fine	Middle	4.0	22.90	22.90	22.90	8.29	8.29	8.29	32.34	32.34	32.34	88.3	88.8	88.8	6.30	6.33	6.33	5.98	6.19	6.09	8	9.00
	15:32		Middle	4.0	22.90	22.90		8.29	8.29		32.34	32.34		88.9	89.0		6.34	6.34		6.17	6.02		10	
6/12/17	19:25	Cloudy	Middle	4.0	21.40	21.40	21.40	8.16	8.16	8.16	33.07	33.07	33.07	91.0	90.5	91.0	6.64	6.60	6.63	6.37	6.27	6.28	9	9.50
	19:26		Middle	4.0	21.40	21.40		8.16	8.16		33.07	33.07		91.2	91.1		6.65	6.64		6.25	6.23		10	
9/12/17	10:00	Fine	Middle	3.5	20.40	20.40	20.35	8.24	8.24	8.25	32.40	32.40	32.41	83.4	83.6	83.7	6.23	6.24	6.25	7.75	7.76	7.76	11	10.50
	10:02		Middle	3.5	20.30	20.30		8.26	8.26		32.41	32.41		83.7	83.9		6.25	6.27		7.77	7.77		10	
12/12/17	13:45	Fine	Middle	3.5	21.70	21.70	21.75	8.27	8.27	8.27	32.49	32.49	32.49	90.1	90.3	90.2	6.55	6.56	6.55	3.80	3.80	3.85	4	4.50
	13:47		Middle	3.5	21.80	21.80		8.27	8.27		32.49	32.49		90.1	90.2		6.54	6.55		3.81	3.98		5	
14/12/17	14:30	Fine	Middle	3.5	21.30	21.30	21.35	8.33	8.33	8.34	32.57	32.57	32.57	91.3	91.2	91.0	6.68	6.68	6.66	6.12	6.10	6.09	2	2.00
	14:32		Middle	3.5	21.40	21.40		8.35	8.35		32.57	32.57		91.2	90.3		6.68	6.61		6.07	6.06		2	
16/12/17	15:45	Fine	Middle	4.0	19.90	19.90	19.80	8.35	8.35	8.35	32.31	32.31	32.31	89.1	89.4	89.3	6.72	6.75	6.74	5.74	5.73	5.74	4	4.00
	15:47		Middle	4.0	19.70	19.70		8.35	8.35		32.31	32.31		89.4	89.4		6.74	6.75		5.74	5.75		4	
19/12/17	8:30	Fine	Middle	3.5	18.30	18.30	18.25	8.38	8.38	8.38	32.40	32.40	32.42	82.6	82.1	81.5	6.41	6.37	6.33	12.87	12.83	<u>12.90</u>	7	8.00
	8:32		Middle	3.5	18.20	18.20		8.38	8.38		32.43	32.43		81.0	80.1		6.29	6.26		12.91	12.99		9	
21/12/17	7:58	Fine	Middle	3.5	17.70	17.70	17.70	8.34	8.34	8.34	32.33	32.33	32.33	94.8	95.1	94.8	7.44	7.46	7.44	8.46	8.42	<u>8.41</u>	8	8.00
	8:00		Middle	3.5	17.70	17.70		8.34	8.34		32.33	32.33		94.6	94.6		7.43	7.43		8.38	8.38		8	
23/12/17	7:45	Cloudy	Middle	3.5	20.90	20.90	20.90	7.92	7.92	7.93	32.66	32.66	32.66	96.8	96.9	96.8	7.17	7.17	7.17	10.23	10.22	<u>10.22</u>	6	6.50
	7:47		Middle	3.5	20.90	20.90		7.93	7.93		32.66	32.66		96.9	96.7		7.17	7.16		10.21	10.21		7	
26/12/17	10:50	Cloudy	Middle	3.5	18.70	18.70	18.70	8.20	8.20	8.20	31.87	31.87	31.87	91.2	91.9	92.1	7.03	7.09	7.10	3.39	3.40	3.33	10	7.50
	10:51		Middle	3.5	18.70	18.70		8.20	8.20		31.87	31.87		92.5	92.8		7.13	7.16		3.28	3.24		5	

Remarks:  
Single underline denotes exceedance over Action Level.  
Double underline denotes exceedance over Limit Level.



**Water Monitoring Result at WSD19 - Sheung Wan  
Mid-Flood Tide**

Date	Time	Weather Condition	Sampling Depth		Water Temperature			pH			Salinity			DO Saturation		DO		Turbidity		Suspended Solids				
					°C			-			ppt			%		mg/L		NTU		mg/L				
			m	Value	Average	Value	Average	Value	Average	Value	Average	Value	Average	Value	Average	Value	Average	Value	Average	Value	Average	Value	Average	
27/11/17	10:05	Cloudy	Middle	3.5	22.50	22.50	22.50	8.22	8.22	8.25	32.60	32.60	32.60	88.9	89.4	89.3	6.38	6.41	6.41	8.96	8.95	8.95	10	10.00
	10:07		Middle	3.5	22.50	22.50		8.27	8.27		32.60	32.60		90.3	88.7		6.48	6.36		8.95	8.95		10	
29/11/17	14:00	Fine	Middle	3.5	23.40	23.40	23.50	8.29	8.29	8.29	32.55	32.55	32.55	93.7	93.0	93.2	6.60	6.55	6.56	6.72	6.73	6.73	9	9.50
	14:02		Middle	3.5	23.60	23.60		8.28	8.28		32.55	32.55		92.9	93.0		6.54	6.54		6.76	6.70		10	
1/12/17	16:20	Fine	Middle	3.5	22.70	22.70	22.75	7.76	7.76	7.78	32.65	32.65	32.65	83.7	82.8	82.5	5.97	5.91	5.89	8.36	8.38	8.42	7	6.50
	16:22		Middle	3.5	22.80	22.80		7.80	7.80		32.65	32.65		82.1	81.5		5.86	5.82		8.41	8.52		6	
4/12/17	18:35	Fine	Middle	3.5	22.30	22.30	22.55	8.25	8.25	8.26	32.41	32.41	32.41	89.6	90.0	89.6	6.45	6.48	6.45	7.54	7.48	7.45	8	9.00
	18:37		Middle	3.5	22.80	22.80		8.26	8.26		32.41	32.41		89.3	89.3		6.43	6.43		7.28	7.50		10	
6/12/17	20:45	Cloudy	Middle	4.0	19.90	19.90	19.90	8.20	8.20	8.20	33.06	33.06	33.06	93.5	93.7	93.1	7.14	7.16	7.11	8.02	7.99	7.96	8	8.00
	20:46		Middle	4.0	19.90	19.90		8.20	8.20		33.06	33.06		92.9	92.1		7.10	7.03		7.97	7.84		8	
9/12/17	11:10	Fine	Middle	3.5	21.00	21.00	20.95	8.28	8.28	8.28	32.48	32.48	32.48	87.5	87.8	87.7	6.46	6.49	6.48	9.05	9.14	9.10	6	5.50
	11:12		Middle	3.5	20.90	20.90		8.28	8.28		32.48	32.48		87.7	87.6		6.48	6.47		9.15	9.06		5	
12/12/17	14:30	Fine	Middle	4.0	21.40	21.40	21.45	8.25	8.25	8.25	32.47	32.47	32.47	87.0	87.3	87.5	6.36	6.38	6.39	7.15	7.17	7.17	14	13.00
	14:32		Middle	4.0	21.50	21.50		8.25	8.25		32.47	32.47		87.8	87.9		6.41	6.41		7.16	7.18		12	
14/12/17	15:45	Fine	Middle	3.5	21.10	21.10	21.20	8.28	8.28	8.30	32.59	32.59	32.59	94.2	94.4	94.0	6.91	8.92	7.39	7.59	7.78	7.75	6	6.50
	15:47		Middle	3.5	21.30	21.30		8.31	8.31		32.59	32.59		93.8	93.4		6.87	6.85		7.85	7.77		7	
16/12/17	14:20	Fine	Middle	3.5	20.00	20.00	20.00	8.24	8.24	8.25	32.51	32.51	32.52	85.7	85.9	85.8	6.44	6.46	6.45	6.59	6.63	6.65	5	5.50
	14:22		Middle	3.5	20.00	20.00		8.26	8.26		32.52	32.52		86.2	85.4		6.48	6.42		6.66	6.70		6	
19/12/17	7:25	Fine	Middle	3.5	17.80	17.80	17.75	8.35	8.35	8.35	32.38	32.38	32.38	83.2	81.8	82.4	6.52	6.41	6.50	10.56	10.52	10.52	10	10.00
	7:27		Middle	3.5	17.70	17.70		8.35	8.35		32.37	32.37		82.8	81.6		6.59	6.49		10.50	10.50		10	
21/12/17	9:00	Fine	Middle	3.5	17.70	17.70	17.65	8.35	8.35	8.35	32.34	32.34	32.35	89.7	89.9	89.7	7.04	7.06	7.04	9.54	9.53	9.50	7	8.00
	9:02		Middle	3.5	17.60	17.60		8.35	8.35		32.35	32.35		89.6	89.4		7.04	7.03		9.48	9.45		9	
23/12/17	11:30	Cloudy	Middle	4.0	19.50	19.50	19.65	8.21	8.21	8.24	32.88	32.88	32.88	96.4	95.7	95.2	7.25	7.20	7.16	8.58	8.57	8.73	7	7.00
	11:32		Middle	4.0	19.80	19.80		8.26	8.26		32.87	32.87		94.5	94.2		7.11	7.08		8.88	8.87		7	
26/12/17	9:15	Cloudy	Middle	3.5	19.00	19.00	19.00	8.20	8.20	8.20	32.80	32.80	32.80	85.8	87.0	86.5	6.54	6.64	6.60	6.60	6.54	6.48	5	5.50
	9:16		Middle	3.5	19.00	19.00		8.20	8.20		32.80	32.80		87.1	86.1		6.64	6.56		6.37	6.39		6	

Remarks:  
Single underline denotes exceedance over Action Level.  
Double underline denotes exceedance over Limit Level.





**Water Monitoring Result at C7 - Windsor House  
Mid-Ebb Tide**

Date	Time	Weather Condition	Sampling Depth		Water Temperature		pH			Salinity			DO Saturation		DO		Turbidity		Suspended Solids					
					°C		-			ppt			%		mg/L		NTU		mg/L					
					Value	Average	Value	Average	Value	Average	Value	Average	Value	Average	Value	Average	Value	Average	Value	Average				
27/11/17	3:00	Cloudy	Middle	-	21.30	21.30	21.30	8.02	8.02	8.03	32.82	32.82	32.82	87.6	87.5	87.5	6.41	6.40	6.41	3.29	3.27	3.22	6	7.50
	3:01		Middle	-	21.30	21.30		8.04	8.04		32.82	32.82		87.7	87.3		6.42	6.39		6.41	3.10		3.20	
29/11/17	7:50	Fine	Middle	-	23.50	23.50	23.55	8.23	8.23	8.23	32.23	32.23	32.24	87.7	87.9	87.8	6.19	6.20	6.19	2.80	2.80	2.81	7	6.00
	7:52		Middle	-	23.60	23.60		8.23	8.23		32.24	32.24		87.7	87.7		6.19	6.18		6.19	2.81		2.81	
1/12/17	11:35	Fine	Middle	-	23.20	23.20	23.25	8.34	8.34	8.34	32.06	32.06	32.06	85.4	85.4	85.2	6.06	6.06	6.04	10.30	10.25	<u>10.24</u>	11	10.00
	11:37		Middle	-	23.30	23.30		8.35	8.33		32.05	32.05		85.1	84.7		6.04	6.01		6.04	10.22		10.19	
4/12/17	10:30	Fine	Middle	-	23.10	23.10	23.10	8.29	8.29	8.29	32.36	32.36	32.37	84.9	85.7	85.2	6.04	6.09	6.06	7.90	7.90	7.90	6	6.50
	10:32		Middle	-	23.10	23.10		8.28	8.28		32.38	32.38		85.1	85.2		6.05	6.06		6.06	7.90		7.91	
7/12/17	2:41	Cloudy	Middle	-	19.80	19.80	19.80	8.22	8.22	8.22	32.94	32.94	32.94	88.4	89.5	88.9	6.78	6.86	6.81	6.08	6.10	6.06	7	8.00
	2:42		Middle	-	19.80	19.80		8.22	8.22		32.94	32.94		89.0	88.5		6.81	6.78		6.81	6.05		6.02	
9/12/17	3:00	Fine	Middle	-	18.00	18.00	18.00	8.03	8.03	8.03	32.93	32.93	32.93	87.9	88.4	88.8	6.84	6.88	6.91	7.99	8.02	7.97	11	9.50
	3:01		Middle	-	18.00	18.00		8.03	8.03		32.93	32.93		89.6	89.4		6.98	6.95		6.91	8.00		7.87	
12/12/17	8:35	Fine	Middle	-	21.10	21.10	21.05	8.24	8.24	8.24	32.34	32.34	32.35	85.4	85.8	85.6	6.29	6.32	6.31	4.36	4.36	4.37	7	6.50
	8:37		Middle	-	21.00	21.00		8.24	8.24		32.35	32.35		85.6	85.6		6.31	6.31		6.31	4.37		4.38	
14/12/17	8:45	Fine	Middle	-	21.90	21.90	21.90	8.27	8.27	8.28	32.45	32.45	32.45	91.6	91.8	91.7	6.64	6.66	6.65	5.72	5.70	5.72	3	3.00
	8:47		Middle	-	21.90	21.90		8.28	8.28		32.44	32.44		91.9	91.6		6.67	6.64		6.65	5.73		5.73	
16/12/17	2:25	cloudy	Middle	-	18.60	18.60	18.60	7.83	7.83	7.83	32.76	32.76	32.76	88.0	89.4	88.9	6.78	6.89	6.85	6.25	6.36	6.36	4	5.50
	2:26		Middle	-	18.60	18.60		7.83	7.83		32.76	32.76		89.3	89.0		6.89	6.84		6.85	6.42		6.40	
19/12/17	0:15	Fine	Middle	-	15.70	15.70	15.70	8.13	8.13	8.13	32.81	32.81	32.81	88.2	88.3	88.6	7.17	7.18	7.20	3.09	3.16	3.16	3	3.50
	0:16		Middle	-	15.70	15.70		8.13	8.13		32.81	32.81		89.0	88.7		7.24	7.21		7.20	3.18		3.22	
21/12/17	4:45	Fine	Middle	-	14.90	14.90	14.90	7.94	7.94	7.94	32.64	32.64	32.64	87.0	86.9	86.9	7.20	7.20	7.20	8.76	8.72	8.68	3	3.50
	4:46		Middle	-	14.90	14.90		7.94	7.94		32.64	32.64		87.3	86.5		7.22	7.16		7.20	8.63		8.60	
23/12/17	2:00	Fine	Middle	-	18.20	18.20	18.20	8.16	8.16	8.16	32.79	32.79	32.79	91.7	91.5	92.0	7.10	7.08	7.12	3.88	3.98	3.92	3	3.00
	2:01		Middle	-	18.20	18.20		8.16	8.16		32.79	32.79		92.2	92.4		7.15	7.16		7.12	3.93		3.90	
26/12/17	4:15	Cloudy	Middle	-	18.40	18.40	18.40	8.14	8.14	8.14	32.68	32.68	32.68	88.0	89.9	88.9	6.80	6.95	6.87	2.47	2.81	2.62	6	7.00
	4:16		Middle	-	18.40	18.40		8.14	8.14		32.68	32.68		89.7	88.1		6.93	6.81		6.87	2.59		2.61	

Remarks:  
Single underline denotes exceedance over Action Level.  
Double underline denotes exceedance over Limit Level.



**Water Monitoring Result at C1 - HKCEC  
Mid-Ebb Tide**

Date	Time	Weather Condition	Sampling Depth		Water Temperature		pH			Salinity			DO Saturation		DO		Turbidity		Suspended Solids					
					°C		-			ppt			%		mg/L		NTU		mg/L					
					Value	Average	Value	Average	Value	Average	Value	Average	Value	Average	Value	Average	Value	Average	Value	Average				
27/11/17	4:27	Cloudy	Middle	3.0	21.70	21.70	21.65	8.10	8.10	8.11	32.90	32.90	32.91	87.8	88.3	87.3	6.39	6.42	6.35	3.95	3.93	3.96	6	5.50
	4:28		Middle	3.0	21.60	21.60		8.12	8.12		32.91	32.91		86.8	86.2		6.31	6.27		3.97	3.99		5	
29/11/17	10:05	Fine	Middle	2.5	23.00	23.00	23.00	8.27	8.27	8.27	32.47	32.47	32.47	86.9	87.8	87.3	6.18	6.24	6.20	6.02	6.08	6.04	10	9.00
	10:07		Middle	2.5	23.00	23.00		8.26	8.26		32.46	32.46		87.8	86.5		6.24	6.15		6.04	6.02		8	
1/12/17	11:05	Fine	Middle	2.5	22.50	22.50	22.50	8.29	8.29	8.29	32.39	32.39	32.39	89.3	89.4	89.2	6.40	6.42	6.40	6.64	6.67	6.69	9	9.50
	11:07		Middle	2.5	22.50	22.50		8.29	8.29		32.38	32.38		89.4	88.8		6.42	6.37		6.69	6.76		10	
4/12/17	13:40	Fine	Middle	2.5	22.20	22.20	22.20	8.28	8.28	8.28	32.43	32.43	32.44	86.4	86.6	86.2	6.24	6.25	6.22	7.42	7.53	7.52	8	8.00
	13:42		Middle	2.5	22.20	22.20		8.28	8.28		32.44	32.44		85.8	85.8		6.19	6.19		7.59	7.55		8	
7/12/17	0:45	Cloudy	Middle	3.0	19.40	19.40	19.40	8.29	8.29	8.29	33.08	33.08	33.08	92.2	93.0	92.5	7.10	7.16	7.12	7.76	7.72	7.77	9	9.00
	0:46		Middle	3.0	19.40	19.40		8.29	8.29		33.08	33.08		93.5	91.2		7.20	7.02		7.73	7.86		9	
9/12/17	4:31	Fine	Middle	2.5	18.20	18.20	18.20	8.13	8.13	8.13	32.82	32.82	32.82	85.0	86.4	85.7	6.60	6.70	6.65	7.21	7.09	7.08	7	6.00
	4:32		Middle	2.5	18.20	18.20		8.13	8.13		32.82	32.82		86.0	85.3		6.67	6.61		7.01	7.00		5	
12/12/17	7:35	Fine	Middle	2.5	20.40	20.40	20.40	8.29	8.29	8.29	32.50	32.50	32.50	85.7	85.8	85.8	6.39	6.40	6.39	7.40	7.37	7.35	5	6.00
	7:37		Middle	2.5	20.40	20.40		8.29	8.29		32.50	32.50		85.6	85.9		6.38	6.40		7.33	7.30		7	
14/12/17	11:20	Fine	Middle	2.5	20.40	20.40	20.40	8.36	8.36	8.36	32.60	32.60	32.60	94.3	93.8	94.2	7.02	6.99	7.01	5.50	5.43	5.46	5	5.00
	11:22		Middle	2.5	20.40	20.40		8.36	8.36		32.60	32.60		94.2	94.3		7.02	7.02		5.45	5.47		5	
16/12/17	0:58	cloudy	Middle	2.5	17.40	17.40	17.40	8.25	8.25	8.25	33.02	33.02	33.02	80.8	91.9	89.0	7.14	7.23	7.20	7.88	7.93	7.94	4	4.50
	0:59		Middle	2.5	17.40	17.40		8.25	8.25		33.02	33.02		92.0	91.4		7.24	7.19		7.95	7.99		5	
19/12/17	3:22	Fine	Middle	2.5	16.20	16.20	16.20	8.17	8.17	8.17	32.93	32.93	32.93	90.4	90.9	90.7	7.28	7.32	7.31	6.51	6.50	6.47	12	10.50
	3:23		Middle	2.5	16.20	16.20		8.17	8.17		32.93	32.93		91.1	90.3		7.35	7.28		6.48	6.37		9	
21/12/17	4:18	Fine	Middle	2.5	14.80	14.80	14.80	8.19	8.19	8.19	32.86	32.86	32.86	89.7	91.2	91.0	7.42	7.54	7.53	7.10	7.08	7.14	5	4.50
	4:19		Middle	2.5	14.80	14.80		8.19	8.19		32.86	32.86		91.3	91.8		7.55	7.59		7.16	7.20		4	
23/12/17	4:00	Fine	Middle	2.5	17.90	17.90	17.90	8.18	8.18	8.18	32.79	32.79	32.79	93.2	92.9	92.8	7.27	7.24	7.24	7.46	7.39	7.43	4	4.00
	4:01		Middle	2.5	17.90	17.90		8.18	8.18		32.79	32.79		92.8	92.4		7.23	7.20		7.43	7.45		4	
26/12/17	6:40	Cloudy	Middle	2.5	17.90	17.90	17.90	8.13	8.13	8.14	32.74	32.74	32.75	83.6	84.6	84.5	6.52	6.60	6.59	4.59	4.38	4.35	4	4.00
	6:41		Middle	2.5	17.90	17.90		8.14	8.14		32.76	32.74		84.9	84.7		6.62	6.60		4.24	4.17		4	

Remarks:  
Single underline denotes exceedance over Action Level.  
Double underline denotes exceedance over Limit Level.



**Water Monitoring Result at P1 - HKCEC Phase I  
Mid-Ebb Tide**

Date	Time	Weather Condition	Sampling Depth		Water Temperature		pH			Salinity			DO Saturation		DO		Turbidity		Suspended Solids					
					°C		-			ppt			%		mg/L		NTU		mg/L					
			m	Value	Average	Value	Average	Value	Average	Value	Average	Value	Average	Value	Average	Value	Average	Value	Average	Value	Average			
27/11/17	4:00	Cloudy	Middle	3.0	21.20	21.20	21.20	8.24	8.24	8.24	33.01	33.01	33.01	91.3	92.5	92.0	6.68	6.77	6.73	4.09	4.11	4.11	6	6.00
	4:01		Middle	3.0	21.20	21.20		8.24	8.24		33.01	33.01		92.9	91.2		6.80	6.67		4.13	4.10		6	
29/11/17	9:45	Fine	Middle	2.5	23.50	23.50	23.55	8.24	8.24	8.25	32.51	32.51	32.51	92.8	93.3	93.0	6.54	6.57	6.55	5.75	5.82	5.91	8	7.00
	9:47		Middle	2.5	23.60	23.60		8.25	8.25		32.50	32.50		93.0	93.0		6.55	6.55		5.99	6.07		6	
1/12/17	10:45	Fine	Middle	2.5	22.70	22.70	22.75	8.23	8.23	8.25	32.25	32.25	32.25	91.5	91.8	91.5	6.54	6.57	6.53	5.39	5.18	5.25	5	5.00
	10:47		Middle	2.5	22.80	22.80		8.27	8.27		32.25	32.25		91.4	91.2		6.52	6.50		5.22	5.22		5	
4/12/17	13:20	Fine	Middle	2.5	22.80	22.80	22.90	8.30	8.30	8.30	32.42	32.42	32.42	89.6	89.7	88.9	6.38	6.39	6.34	5.08	5.03	5.08	7	6.00
	13:22		Middle	2.5	23.00	23.00		8.29	8.29		32.42	32.42		89.0	87.4		6.34	6.23		5.09	5.10		5	
7/12/17	0:21	Cloudy	Middle	3.0	19.20	19.20	19.20	8.30	8.30	8.30	33.05	33.05	33.05	92.6	91.9	92.0	7.16	7.10	7.11	7.60	7.47	7.43	7	8.00
	0:22		Middle	3.0	19.20	19.20		8.30	8.30		33.05	33.05		91.3	92.2		7.05	7.13		7.37	7.27		9	
9/12/17	4:10	Fine	Middle	2.5	17.10	17.10	17.10	8.21	8.21	8.21	33.07	33.07	33.07	92.2	90.1	91.6	7.28	7.11	7.23	4.86	4.90	4.86	8	11.00
	4:11		Middle	2.5	17.10	17.10		8.21	8.21		33.07	33.07		91.8	92.1		7.25	7.27		4.88	4.80		14	
12/12/17	7:15	Fine	Middle	2.5	20.10	20.10	20.15	8.21	8.21	8.23	32.60	32.60	32.61	89.1	89.2	89.2	6.66	6.67	6.67	6.61	6.63	6.63	4	4.00
	7:17		Middle	2.5	20.20	20.20		8.25	8.25		32.61	32.61		89.2	89.2		6.67	6.67		6.64	6.65		4	
14/12/17	11:00	Fine	Middle	2.5	20.60	20.60	20.65	8.34	8.34	8.35	32.61	32.61	32.61	95.2	94.7	94.7	7.04	7.02	7.01	5.14	5.16	5.14	4	4.00
	11:02		Middle	2.5	20.70	20.70		8.35	8.35		32.61	32.61		94.4	94.4		6.99	7.00		5.14	5.12		4	
16/12/17	0:35	cloudy	Middle	2.5	16.50	16.50	16.50	8.22	8.22	8.22	33.06	33.06	33.06	95.2	95.3	72.5	7.61	7.62	7.59	6.10	6.12	6.09	5	5.00
	0:36		Middle	2.5	16.50	16.50		8.22	8.22		33.06	33.06		95.0	4.3		7.60	7.54		6.08	6.05		5	
19/12/17	2:55	Fine	Middle	2.5	15.20	15.20	15.15	8.22	8.22	8.22	32.92	32.91	32.91	92.0	91.4	91.6	7.55	7.50	7.52	7.00	7.05	7.01	10	10.00
	14:40		Middle	2.5	15.00	15.20		8.22	8.22		32.91	32.91		91.5	91.6		7.51	7.52		7.01	6.98		10	
21/12/17	3:50	Fine	Middle	2.5	14.00	14.00	14.00	8.25	8.25	8.25	32.86	32.86	32.86	91.5	92.0	92.3	7.69	7.73	7.75	6.20	6.11	6.11	5	5.00
	3:51		Middle	2.5	14.00	14.00		8.25	8.25		32.86	32.86		93.4	92.2		7.84	7.74		6.08	6.05		5	
23/12/17	3:35	Fine	Middle	2.5	17.80	17.80	17.80	8.23	8.23	8.23	32.91	32.91	32.91	95.9	96.7	96.1	7.49	7.54	7.49	8.90	8.88	8.88	5	4.50
	3:36		Middle	2.5	17.80	17.80		8.23	8.23		32.91	32.91		96.6	95.0		7.53	7.40		8.92	8.80		4	
26/12/17	6:05	Cloudy	Middle	2.5	18.20	18.20	18.20	8.25	8.25	8.25	32.75	32.75	32.75	88.3	89.0	88.7	6.85	6.90	6.88	4.26	4.31	4.30	5	5.00
	6:06		Middle	2.5	18.20	18.20		8.25	8.25		32.75	32.75		88.5	88.9		6.87	6.90		4.34	4.29		5	

Remarks:  
Single underline denotes exceedance over Action Level.  
Double underline denotes exceedance over Limit Level.



**Water Monitoring Result at P3 - APA  
Mid-Ebb Tide**

Date	Time	Weather Condition	Sampling Depth		Water Temperature			pH			Salinity			DO Saturation		DO		Turbidity		Suspended Solids				
					°C		-		ppt		%		mg/L		NTU		mg/L							
					Value	Average	Value	Average	Value	Average	Value	Average	Value	Average	Value	Average	Value	Average	Value	Average				
27/11/17	4:07	Cloudy	Middle	3.0	21.30	21.30	21.30	8.26	8.26	8.26	33.02	33.02	33.02	90.2	90.0	89.2	6.60	6.58	6.52	4.70	4.71	4.69	5	5.00
	4:08		Middle	3.0	21.30	21.30		8.26	8.26		33.02	33.02		88.3	88.2		6.46	6.45		4.68	4.66		5	
29/11/17	9:50	Fine	Middle	2.5	23.00	23.00	23.05	8.26	8.26	8.27	32.49	32.49	32.49	87.1	87.0	86.9	6.19	6.18	6.18	5.44	5.25	5.44	6	5.50
	9:52		Middle	2.5	23.10	23.10		8.27	8.27		32.48	32.48		86.5	87.0		6.15	6.18		5.50	5.56		5	
1/12/17	10:50	Fine	Middle	2.5	22.40	22.40	22.45	8.29	8.29	8.29	32.38	32.38	32.38	89.8	89.9	89.8	6.46	6.46	6.46	4.81	4.85	4.85	5	5.50
	10:52		Middle	2.5	22.50	22.50		8.29	8.29		32.38	32.38		89.8	89.8		6.45	6.46		4.87	4.88		6	
4/12/17	13:25	Fine	Middle	2.5	22.30	22.30	22.35	8.29	8.29	8.29	32.43	32.43	32.43	86.5	86.7	86.6	6.23	6.24	6.24	6.24	6.25	6.23	4	5.00
	13:27		Middle	2.5	22.40	22.40		8.29	8.29		32.43	32.43		86.6	86.7		6.23	6.24		6.25	6.18		6	
7/12/17	0:25	Cloudy	Middle	3.0	19.20	19.20	19.20	8.30	8.30	8.30	33.07	33.07	33.07	94.3	94.5	94.2	7.32	7.32	7.29	7.77	7.73	7.66	10	8.50
	0:26		Middle	3.0	19.20	19.20		8.30	8.30		33.07	33.07		94.2	93.6		7.28	7.23		7.61	7.54		7	
9/12/17	4:15	Fine	Middle	2.5	17.50	17.50	17.40	8.23	8.23	8.23	33.05	33.05	33.05	88.7	88.1	88.4	6.95	6.91	6.93	5.50	5.59	5.63	9	11.50
	4:16		Middle	2.5	17.50	17.10		8.23	8.23		33.05	33.05		88.6	88.3		6.94	6.92		5.69	5.72		14	
12/12/17	7:20	Fine	Middle	2.5	20.00	20.00	20.00	8.27	8.27	8.28	32.50	32.50	32.50	86.8	87.1	86.9	6.52	6.54	6.53	5.17	5.13	5.13	4	4.00
	7:22		Middle	2.5	20.00	20.00		8.28	8.28		32.50	32.50		86.7	86.9		6.51	6.53		5.11	5.09		4	
14/12/17	11:05	Fine	Middle	2.5	20.30	20.30	20.30	8.36	8.36	8.36	37.62	32.62	33.87	92.7	92.8	92.8	6.91	6.92	6.92	5.58	5.55	5.55	5	5.50
	11:07		Middle	2.5	20.30	20.30		8.36	8.36		32.62	32.62		93.0	92.6		6.94	6.91		5.53	5.52		6	
16/12/17	0:42	cloudy	Middle	2.5	16.60	16.60	16.60	8.28	8.28	8.28	33.06	33.06	33.06	91.2	91.5	91.6	7.27	7.30	7.32	7.30	7.38	7.17	6	5.50
	0:43		Middle	2.5	16.60	16.60		8.28	8.28		33.06	33.06		92.1	91.6		7.35	7.36		7.00	6.98		5	
19/12/17	3:01	Fine	Middle	2.5	15.50	15.50	15.50	8.24	8.24	8.24	32.92	32.92	32.92	91.7	91.4	91.9	7.48	7.46	7.50	7.87	7.89	7.89	9	7.00
	3:02		Middle	2.5	15.50	15.50		8.24	8.24		32.92	32.92		92.5	92.1		7.55	7.52		8.01	7.79		5	
21/12/17	3:57	Fine	Middle	2.5	14.40	14.40	14.40	8.27	8.27	8.27	32.83	32.83	32.83	88.9	91.7	91.4	7.42	7.65	7.63	8.89	8.91	8.91	4	4.00
	3:58		Middle	2.5	14.40	14.40		8.27	8.27		32.83	32.83		92.5	92.6		7.72	7.73		8.92	8.93		4	
23/12/17	3:43	Fine	Middle	2.5	17.80	17.80	17.80	8.26	8.26	8.26	32.90	32.90	32.90	94.4	94.8	94.5	7.37	7.40	7.38	8.96	8.97	8.95	3	3.50
	3:44		Middle	2.5	17.80	17.80		8.26	8.26		32.90	32.90		94.6	94.2		7.39	7.35		8.92	8.94		4	
26/12/17	6:11	Cloudy	Middle	2.5	17.90	17.90	17.90	8.23	8.23	8.23	32.77	32.77	32.77	86.3	85.8	86.0	6.73	6.69	6.70	3.70	3.86	3.77	5	5.00
	6:12		Middle	2.5	17.90	17.90		8.23	8.23		32.77	32.77		86.0	85.7		6.71	6.68		3.78	3.75		5	

Remarks:  
Single underline denotes exceedance over Action Level.  
Double underline denotes exceedance over Limit Level.



**Water Monitoring Result at P4 - SOC  
Mid-Ebb Tide**

Date	Time	Weather Condition	Sampling Depth		Water Temperature			pH			Salinity			DO Saturation		DO		Turbidity		Suspended Solids				
					°C		-		ppt		%		mg/L		NTU		mg/L							
					Value	Average	Value	Average	Value	Average	Value	Average	Value	Average	Value	Average	Value	Average	Value	Average				
27/11/17	4:15	Cloudy	Middle	3.0	21.50	21.50	21.50	8.18	8.18	8.20	33.01	33.01	33.02	87.2	88.7	87.8	6.35	6.46	6.39	4.53	4.56	4.54	5	6.00
	4:16		Middle	3.0	21.50	21.50		8.21	8.21		33.01	33.03		87.8	87.3		6.39	6.36		4.55	4.50		7	
29/11/17	9:55	Fine	Middle	2.5	22.90	22.90	22.95	8.27	8.27	8.27	32.48	32.48	32.48	86.9	87.4	87.4	6.19	6.23	6.22	5.37	5.36	5.49	7	7.00
	9:57		Middle	2.5	23.00	23.00		8.27	8.27		32.47	32.47		87.5	87.6		6.23	6.24		5.57	5.64		7	
1/12/17	10:55	Fine	Middle	2.5	22.40	22.40	22.40	8.30	8.30	8.30	32.38	32.38	32.38	89.3	89.1	89.1	6.43	6.41	6.41	6.78	6.63	6.79	6	6.00
	10:57		Middle	2.5	22.40	22.40		8.30	8.30		32.38	32.38		88.8	89.0		6.38	6.41		6.92	6.81		6	
4/12/17	13:30	Fine	Middle	2.5	22.10	22.10	22.10	8.29	8.29	8.29	32.44	32.44	32.44	85.0	85.2	85.1	6.14	6.15	6.14	5.65	5.84	5.78	7	7.50
	13:32		Middle	2.5	22.10	22.10		8.29	8.29		32.44	32.44		84.9	85.2		6.13	6.15		5.87	5.74		8	
7/12/17	0:33	Cloudy	Middle	3.0	19.30	19.30	19.30	8.31	8.31	8.31	33.07	33.07	33.07	90.1	90.0	89.7	6.96	6.95	6.93	7.37	7.32	7.30	9	8.00
	0:34		Middle	3.0	19.30	19.30		8.31	8.31		33.07	33.07		89.6	89.2		6.92	6.88		7.21	7.28		7	
9/12/17	4:23	Fine	Middle	2.5	17.70	17.70	17.70	8.24	8.24	8.24	33.05	33.05	33.05	89.2	88.3	88.3	6.97	6.90	6.90	8.01	7.99	7.98	8	7.50
	4:24		Middle	2.5	17.70	17.70		8.24	8.24		33.05	33.05		88.0	87.5		6.88	6.83		7.97	7.93		7	
12/12/17	7:25	Fine	Middle	2.5	20.10	21.10	20.35	8.28	8.28	8.28	32.19	32.19	32.19	85.6	85.5	85.5	6.42	6.41	6.41	5.75	5.75	5.75	6	6.50
	7:27		Middle	2.5	20.10	20.10		8.28	8.28		32.19	32.19		85.6	85.4		6.42	6.40		5.75	5.73		7	
14/12/17	11:10	Fine	Middle	2.5	20.30	20.30	20.23	8.36	8.36	8.36	32.62	32.62	32.62	94.6	94.9	94.7	7.07	7.09	7.07	6.19	6.02	6.05	6	6.00
	11:12		Middle	2.5	20.00	20.30		8.36	8.36		32.62	32.62		93.9	95.3		7.00	7.11		6.00	6.00		6	
16/12/17	0:50	cloudy	Middle	2.5	17.20	17.20	17.20	8.16	8.16	8.16	33.01	33.01	33.01	90.3	91.0	90.9	7.18	7.18	7.18	5.97	5.87	5.79	6	5.50
	0:51		Middle	2.5	17.20	17.20		8.16	8.16		33.01	33.01		90.5	91.6		7.14	7.23		5.74	5.59		5	
19/12/17	3:11	Fine	Middle	2.5	16.00	16.00	16.00	8.25	8.25	8.25	32.93	32.93	32.93	89.1	89.3	89.9	7.21	7.22	7.28	7.88	7.79	7.78	4	4.50
	3:12		Middle	2.5	16.00	16.00		8.25	8.25		32.93	32.93		90.6	90.7		7.33	7.34		7.74	7.72		5	
21/12/17	4:03	Fine	Middle	2.5	14.80	14.80	14.80	8.28	8.28	8.28	32.82	32.82	32.82	90.4	90.8	91.0	7.48	7.52	7.54	8.22	8.25	8.13	5	3.50
	4:04		Middle	2.5	14.80	14.80		8.28	8.28		32.82	32.82		91.8	91.0		7.60	7.54		8.04	8.02		2	
23/12/17	3:48	Fine	Middle	2.5	17.70	17.70	17.70	8.27	8.27	8.27	32.88	32.88	32.88	93.2	94.2	93.8	7.28	7.36	7.33	7.57	7.62	7.39	4	4.00
	3:49		Middle	2.5	17.70	17.70		8.27	8.27		32.88	32.88		94.2	93.5		7.36	7.30		7.25	7.10		4	
26/12/17	6:20	Cloudy	Middle	2.5	17.80	17.80	17.80	8.26	8.26	8.26	32.76	32.76	32.76	87.2	87.5	87.4	6.80	6.82	6.82	4.24	4.15	4.15	6	7.00
	6:21		Middle	2.5	17.80	17.80		8.26	8.26		32.76	32.76		87.6	87.3		6.84	6.81		4.12	4.08		8	

Remarks:  
Single underline denotes exceedance over Action Level.  
Double underline denotes exceedance over Limit Level.



**Water Monitoring Result at P5 - WCT / RT / IT  
Mid-Ebb Tide**

Date	Time	Weather Condition	Sampling Depth		Water Temperature			pH			Salinity			DO Saturation		DO		Turbidity		Suspended Solids				
					°C		-		ppt		%		mg/L		NTU		mg/L							
					Value	Average	Value	Average	Value	Average	Value	Average	Value	Average	Value	Average	Value	Average	Value	Average				
27/11/17	4:23	Cloudy	Middle	3.0	21.50	21.50	21.50	8.27	8.27	8.27	32.94	32.94	32.94	85.1	85.6	85.2	6.21	6.24	6.21	3.93	3.91	3.90	7	7.50
	4:24		Middle	3.0	21.50	21.50		8.27	8.27		32.95	32.94		85.5	84.4		6.24	6.15		6.21	3.85		3.90	
29/11/17	10:00	Fine	Middle	2.5	22.90	22.90	22.95	8.27	8.27	8.27	32.48	32.48	32.48	87.6	87.6	87.5	6.24	6.24	6.23	6.61	6.56	6.53	5	4.50
	10:02		Middle	2.5	23.00	23.00		8.27	8.27		32.48	32.48		87.7	87.2		6.24	6.20		6.23	6.48		6.45	
1/12/17	11:00	Fine	Middle	2.5	22.50	22.50	22.50	8.30	8.30	8.30	32.33	32.33	32.36	90.4	90.4	90.4	6.49	6.49	6.49	7.06	7.09	7.13	8	8.00
	11:02		Middle	2.5	22.50	22.50		8.29	8.29		32.39	32.39		90.2	90.4		6.47	6.49		6.49	7.14		7.21	
4/12/17	13:35	Fine	Middle	2.5	22.00	22.00	22.00	8.28	8.28	8.28	32.44	32.44	32.45	85.7	86.1	86.2	6.20	6.23	6.24	7.54	7.62	7.71	7	7.50
	13:37		Middle	2.5	22.00	22.00		8.28	8.28		32.45	32.45		86.2	86.6		6.24	6.27		6.24	7.87		7.80	
7/12/17	0:37	Cloudy	Middle	3.0	19.20	19.20	19.20	8.32	8.32	8.32	33.07	33.07	33.07	93.9	94.0	93.3	7.25	7.30	7.22	7.86	7.79	7.78	6	6.00
	0:38		Middle	3.0	19.20	19.20		8.32	8.32		33.07	33.07		92.9	92.5		7.18	7.15		7.22	7.75		7.72	
9/12/17	4:27	Fine	Middle	2.5	17.40	17.40	17.40	8.26	8.26	8.26	32.93	32.93	32.93	89.6	88.8	88.9	7.04	6.98	6.98	7.11	7.09	7.12	10	9.50
	4:28		Middle	2.5	17.40	17.40		8.26	8.26		32.93	32.93		89.0	88.1		6.99	6.92		6.98	7.13		7.15	
12/12/17	7:30	Fine	Middle	2.5	20.40	20.40	20.35	8.28	8.28	8.29	32.49	32.49	32.50	84.6	84.7	84.8	6.30	6.31	6.32	6.19	6.16	6.17	5	6.00
	7:32		Middle	2.5	20.30	20.30		8.29	8.29		32.50	32.50		84.9	84.8		6.33	6.32		6.32	6.16		6.17	
14/12/17	11:15	Fine	Middle	2.5	20.30	20.30	20.35	8.36	8.36	8.36	32.55	32.55	32.58	92.2	91.8	92.3	6.88	6.84	6.89	5.06	5.17	5.15	4	4.00
	11:17		Middle	2.5	20.40	20.40		8.36	8.36		32.61	32.61		92.4	92.9		6.89	6.93		6.89	5.17		5.18	
16/12/17	0:54	cloudy	Middle	2.5	17.30	17.30	17.30	8.26	8.26	8.26	33.02	33.02	33.02	892.1	92.5	292.2	7.25	7.28	7.26	6.21	6.24	6.46	10	8.00
	0:55		Middle	2.5	17.30	17.30		8.26	8.26		33.02	33.02		92.4	91.9		7.28	7.24		7.26	6.70		6.68	
19/12/17	3:17	Fine	Middle	2.5	16.10	16.10	16.10	8.27	8.27	8.27	32.96	32.96	32.96	88.8	87.8	88.4	7.16	7.08	7.13	6.60	6.69	6.77	9	7.50
	3:18		Middle	2.5	16.10	16.10		8.27	8.27		32.96	32.96		88.6	88.3		7.15	7.12		7.13	6.85		6.92	
21/12/17	4:10	Fine	Middle	2.5	14.70	14.70	14.70	8.29	8.29	8.29	32.87	32.87	32.87	90.6	91.7	91.4	7.51	7.61	7.59	8.98	8.96	8.90	4	4.00
	4:11		Middle	2.5	14.70	14.70		8.29	8.29		32.87	32.87		92.0	91.3		7.64	7.58		7.59	8.83		8.81	
23/12/17	3:53	Fine	Middle	2.5	17.70	17.70	17.70	8.28	8.28	8.28	32.91	32.91	32.91	93.0	92.9	93.5	7.27	7.26	7.30	7.84	7.86	7.82	3	3.50
	3:54		Middle	2.5	17.70	17.70		8.28	8.28		32.91	32.91		93.9	94.1		7.33	7.35		7.30	7.80		7.78	
26/12/17	6:33	Cloudy	Middle	2.5	17.90	17.90	17.90	8.27	8.27	8.27	32.74	32.74	32.74	84.5	85.4	85.3	6.59	6.66	6.65	4.23	4.04	4.11	7	7.50
	6:34		Middle	2.5	17.90	17.90		8.27	8.27		32.74	32.74		86.0	85.2		6.70	6.64		6.65	4.10		4.08	

Remarks:  
Single underline denotes exceedance over Action Level.  
Double underline denotes exceedance over Limit Level.



**Water Monitoring Result at RW21-P789 - GEC / CRB / SHK  
Mid-Ebb Tide**

Date	Time	Weather Condition	Sampling Depth		Water Temperature			pH			Salinity			DO Saturation		DO		Turbidity		Suspended Solids				
					°C		-		ppt		%		mg/L		NTU		mg/L							
					Value	Average	Value	Average	Value	Average	Value	Average	Value	Average	Value	Average	Value	Average	Value	Average				
27/11/17	3:45	Cloudy	Middle	4.0	21.00	21.00	21.00	7.79	7.79	7.80	31.03	31.03	31.03	85.4	85.6	85.8	6.36	6.38	6.39	3.46	3.50	3.46	7	6.50
	3:46		Middle	4.0	21.00	21.00		7.81	7.82		31.03	31.03		86.2	86.0		6.42	6.40		3.44	3.42		6	
29/11/17	7:30	Fine	Middle	3.5	23.30	23.30	23.35	8.19	8.19	8.21	32.43	32.43	32.44	87.1	86.8	86.7	6.16	6.14	6.13	4.80	4.81	4.81	5	5.50
	7:32		Middle	3.5	23.40	23.40		8.23	8.23		32.44	32.44		86.9	85.8		6.15	6.06		4.82	4.82		6	
1/12/17	11:15	Fine	Middle	3.5	22.70	22.70	22.75	8.29	8.29	8.29	32.37	32.37	32.37	91.2	91.0	90.8	6.52	6.50	6.49	5.24	5.19	5.16	7	7.50
	11:16		Middle	3.5	22.80	22.80		8.29	8.29		32.36	32.36		90.5	90.3		6.47	6.46		5.12	5.07		8	
4/12/17	10:05	Fine	Middle	3.5	22.50	22.50	22.55	8.36	8.36	8.35	32.78	32.78	32.78	87.7	88.0	87.9	6.27	6.29	6.28	12.18	11.95	<u>12.07</u>	12	12.50
	10:07		Middle	3.5	22.60	22.60		8.33	8.33		32.78	32.78		87.7	88.1		6.27	6.30		11.99	12.17		13	
7/12/17	0:53	Cloudy	Middle	4.0	19.90	19.90	19.90	8.24	8.24	8.24	33.10	33.10	33.10	92.8	92.2	93.4	7.07	7.03	7.12	7.52	7.78	7.60	7	6.50
	0:54		Middle	4.0	19.90	19.90		8.24	8.24		33.10	33.10		94.0	94.4		7.17	7.20		7.53	7.58		6	
9/12/17	3:56	Fine	Middle	4.0	18.10	18.10	18.10	8.07	8.07	8.07	32.89	32.89	32.89	87.6	88.4	87.9	6.80	6.86	6.82	6.00	5.98	5.99	15	9.50
	3:57		Middle	4.0	18.10	18.10		8.07	8.07		32.89	32.89		88.1	87.4		6.84	6.79		6.02	5.97		4	
12/12/17	8:05	Fine	Middle	3.5	20.80	20.80	20.75	8.29	8.29	8.29	32.48	32.48	32.49	87.4	87.4	87.1	6.48	6.48	6.45	5.13	5.16	5.17	8	9.00
	8:07		Middle	3.5	20.70	20.70		8.29	8.29		32.49	32.49		86.6	86.8		6.42	6.43		5.18	5.21		10	
14/12/17	8:30	Fine	Middle	3.5	21.20	21.20	21.20	8.26	8.26	8.29	32.98	32.98	32.98	94.4	94.9	94.6	6.92	6.95	6.93	6.15	6.15	6.12	6	5.00
	8:32		Middle	3.5	21.20	21.20		8.31	8.31		32.98	32.98		94.6	94.3		6.93	6.91		6.08	6.09		4	
16/12/17	2:04	cloudy	Middle	3.5	17.40	17.40	17.40	8.05	8.05	8.05	31.01	31.10	31.03	81.5	82.3	82.1	6.49	6.56	6.54	7.42	7.45	7.48	8	7.50
	2:05		Middle	3.5	17.40	17.40		8.05	8.05		31.01	31.01		82.5	82.1		6.57	6.54		7.44	7.60		7	
19/12/17	1:50	Fine	Middle	3.5	15.50	15.50	15.50	7.87	7.87	7.87	31.03	31.03	31.03	84.1	84.5	85.3	6.93	6.97	7.03	5.59	5.53	5.54	4	4.50
	1:51		Middle	3.5	15.50	15.50		7.87	7.87		31.03	31.03		86.5	86.1		7.13	7.10		5.50	5.54		5	
21/12/17	4:30	Fine	Middle	3.5	14.70	14.70	14.70	8.00	8.00	8.00	30.92	30.92	30.92	90.4	90.0	91.0	7.58	7.56	7.64	5.03	5.00	4.95	3	3.00
	4:31		Middle	3.5	14.70	14.70		8.00	8.00		30.92	30.92		92.1	91.5		7.73	7.68		4.95	4.81		3	
23/12/17	3:15	Fine	Middle	3.5	18.10	18.10	18.10	8.13	8.13	8.13	31.81	31.81	31.81	88.2	88.3	88.6	6.89	6.90	6.92	4.77	4.74	4.73	2	2.00
	3:16		Middle	3.5	18.10	18.10		8.13	8.13		31.81	31.81		88.9	89.0		6.95	6.95		4.72	4.70		2	
26/12/17	5:42	Cloudy	Middle	3.5	19.30	19.30	19.30	8.20	8.20	8.20	31.82	31.82	31.82	88.5	88.9	89.1	6.75	6.79	6.80	3.27	3.53	3.50	5	5.50
	5:43		Middle	3.5	19.30	19.30		8.20	8.20		31.82	31.82		89.9	89.1		6.86	6.80		3.60	3.58		6	

Remarks:  
Single underline denotes exceedance over Action Level.  
Double underline denotes exceedance over Limit Level.



**Water Monitoring Result at WSD19 - Sheung Wan  
Mid-Ebb Tide**

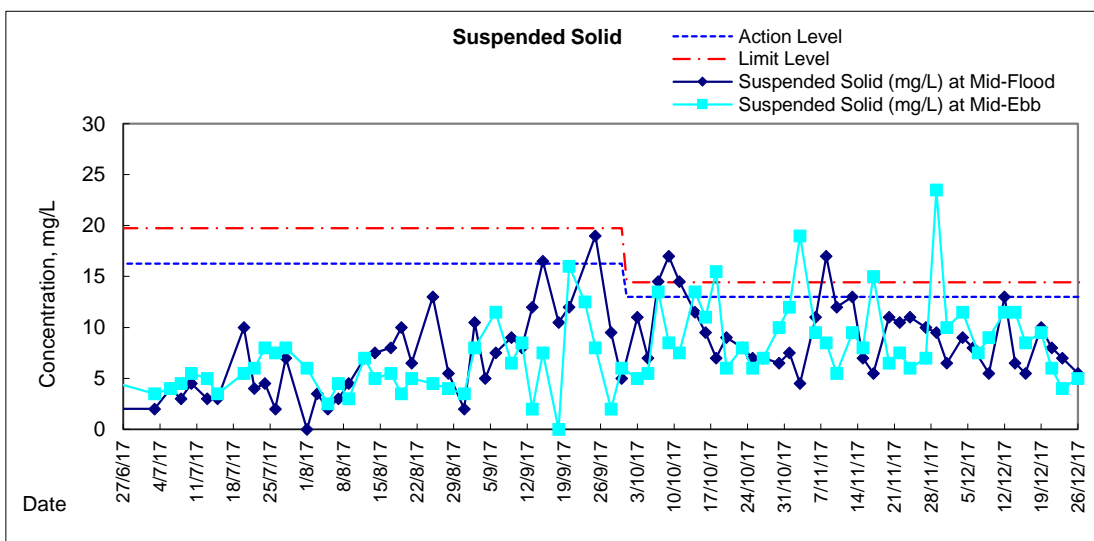
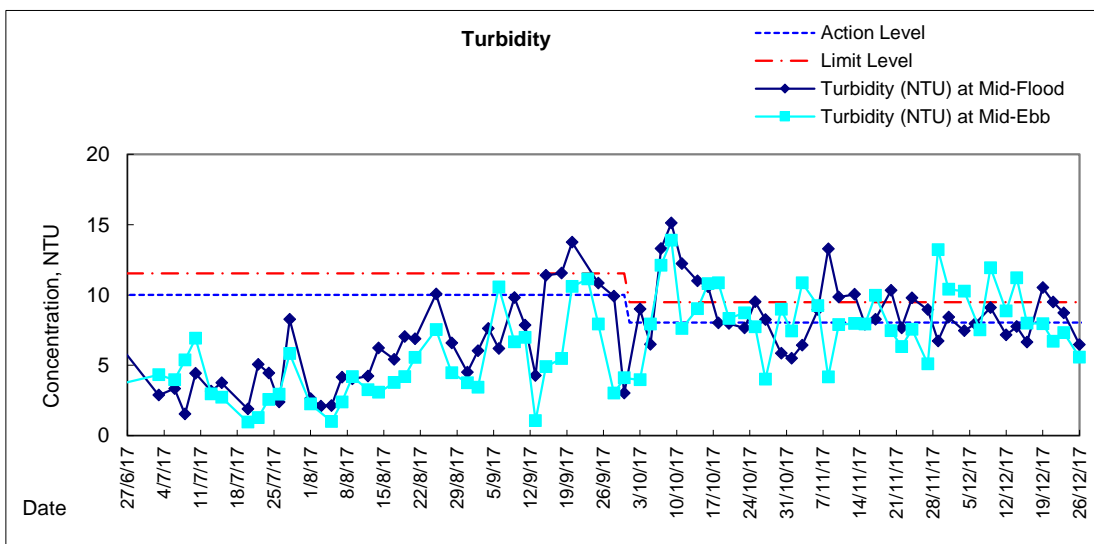
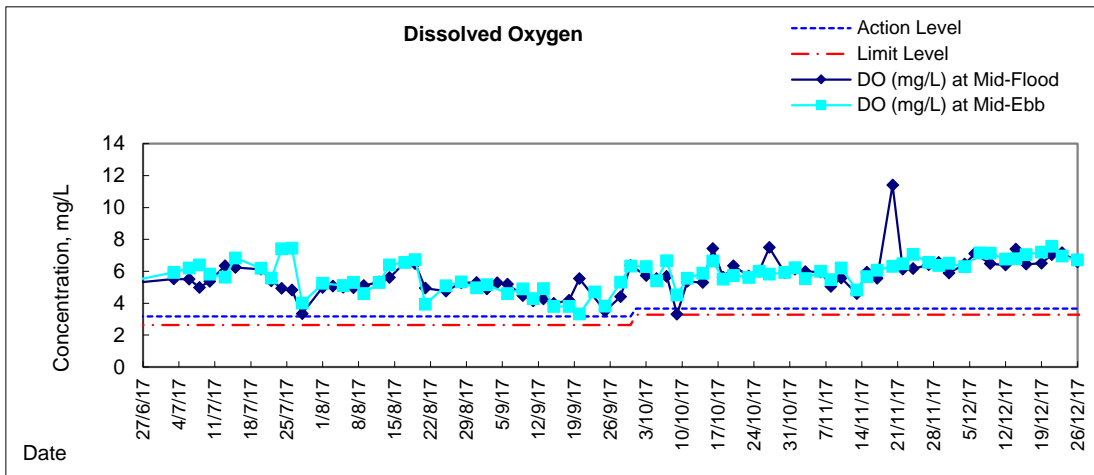
Date	Time	Weather Condition	Sampling Depth		Water Temperature			pH			Salinity			DO Saturation			DO			Turbidity			Suspended Solids	
					°C		-		ppt		%		mg/L		NTU		mg/L							
					Value	Average	Value	Average	Value	Average	Value	Average	Value	Average	Value	Average	Value	Average	Value	Average				
27/11/17	5:00	Cloudy	Middle	4.0	21.10	21.10	21.10	8.22	8.22	8.22	32.90	32.90	32.90	88.2	88.5	89.2	6.47	6.49	6.55	5.02	5.10	5.10	8	7.00
	5:01		Middle	4.0	21.10	21.10		8.22	8.22		32.90	32.90		89.8	90.4		6.59	6.63		5.15	5.12		6	
29/11/17	9:00	Fine	Middle	4.0	23.10	23.10	23.15	8.27	8.27	8.28	32.55	32.55	32.55	89.8	89.8	89.7	6.36	6.36	6.36	13.23	13.23	<u>13.23</u>	24	<u>23.50</u>
	9:02		Middle	4.0	23.20	23.20		8.28	8.28		32.54	32.54		89.8	89.5		6.36	6.34		13.22	13.22		23	
1/12/17	12:00	Fine	Middle	3.5	23.30	23.30	23.40	7.04	7.04	7.04	32.65	32.65	32.65	89.2	85.0	85.2	6.66	6.45	6.50	10.39	10.40	<u>10.40</u>	9	10.00
	12:02		Middle	3.5	23.50	23.50		7.04	7.04		32.65	32.65		80.5	86.0		6.25	6.64		10.40	10.41		11	
4/12/17	11:05	Fine	Middle	4.0	22.90	22.90	22.95	8.24	8.24	8.24	32.41	32.41	32.41	88.4	89.0	88.4	6.29	6.32	6.29	10.24	10.31	<u>10.27</u>	11	11.50
	11:07		Middle	4.0	23.00	23.00		8.24	8.24		32.41	32.41		88.1	88.2		6.27	6.28		10.26	10.27		12	
7/12/17	23:53	Cloudy	Middle	4.0	19.80	19.80	19.80	8.27	8.27	8.27	33.13	33.13	33.13	93.6	94.1	93.6	7.15	7.20	7.15	7.57	7.51	7.51	8	7.50
	23:54		Middle	4.0	19.80	19.80		8.27	8.27		33.13	33.13		93.4	93.1		7.14	7.11		7.48	7.47		7	
9/12/17	4:52	Fine	Middle	3.5	18.30	18.30	18.30	7.91	7.91	7.91	33.01	33.01	33.01	93.1	92.0	92.1	7.20	7.12	7.12	11.94	11.90	<u>11.94</u>	9	9.00
	4:53		Middle	3.5	18.30	18.30		7.91	7.91		33.01	33.01		91.7	91.4		7.10	7.07		11.92	12.00		9	
12/12/17	10:05	Fine	Middle	3.5	20.70	20.70	20.75	8.21	8.21	8.22	32.43	32.43	32.44	91.2	91.4	91.3	6.76	6.77	6.76	8.95	8.92	<u>8.86</u>	11	11.50
	10:07		Middle	3.5	20.80	20.80		8.22	8.22		32.44	32.44		91.6	90.8		6.78	6.72		8.79	8.77		12	
14/12/17	10:15	Fine	Middle	3.5	20.90	20.90	20.90	8.30	8.30	8.30	32.50	32.50	32.50	91.8	91.9	91.8	6.77	6.78	6.78	11.45	11.22	<u>11.22</u>	12	11.50
	10:17		Middle	3.5	20.90	20.90		8.30	8.30		32.50	32.50		91.8	91.7		6.78	6.77		11.10	11.11		11	
16/12/17	23:15	cloudy	Middle	4.0	17.40	17.40	17.40	7.99	7.99	7.99	32.92	32.92	32.92	89.0	89.9	89.5	7.00	7.08	7.04	8.01	8.00	7.99	9	8.50
	23:16		Middle	4.0	17.40	17.40		7.99	7.99		32.92	32.92		90.4	88.7		7.11	6.97		7.98	7.95		8	
19/12/17	3:35	Fine	Middle	3.5	16.60	16.60	16.60	8.01	8.01	8.01	32.70	32.70	32.70	90.0	89.2	89.9	7.21	7.15	7.20	8.00	7.98	7.96	9	9.50
	3:36		Middle	3.5	16.60	16.60		8.01	8.01		32.70	32.70		90.3	90.1		7.24	7.21		7.96	7.90		10	
21/12/17	1:00	Fine	Middle	4.0	15.00	15.00	15.00	8.07	8.07	8.07	32.50	32.50	32.50	91.1	91.6	91.7	7.53	7.56	7.57	6.58	6.66	6.70	7	6.00
	1:01		Middle	4.0	15.00	15.00		8.07	8.07		32.50	32.50		92.4	91.5		7.63	7.56		6.70	6.86		5	
23/12/17	4:20	Fine	Middle	3.5	18.20	18.20	18.20	7.95	7.95	7.95	32.37	32.37	32.37	89.6	89.5	89.5	6.96	6.95	6.95	7.31	7.27	7.32	4	4.00
	4:21		Middle	3.5	18.20	18.20		7.95	7.95		32.37	32.37		89.3	89.6		6.94	6.96		7.33	7.35		4	
26/12/17	8:00	Cloudy	Middle	3.5	19.30	19.30	19.30	8.18	8.18	8.18	32.78	32.78	32.78	88.0	88.3	88.4	6.68	6.70	6.71	5.60	5.59	5.58	4	5.00
	8:01		Middle	3.5	19.30	19.30		8.18	8.18		32.78	32.78		89.3	88.0		6.78	6.68		5.57	5.54		6	

Remarks:  
Single underline denotes exceedance over Action Level.  
Double underline denotes exceedance over Limit Level.



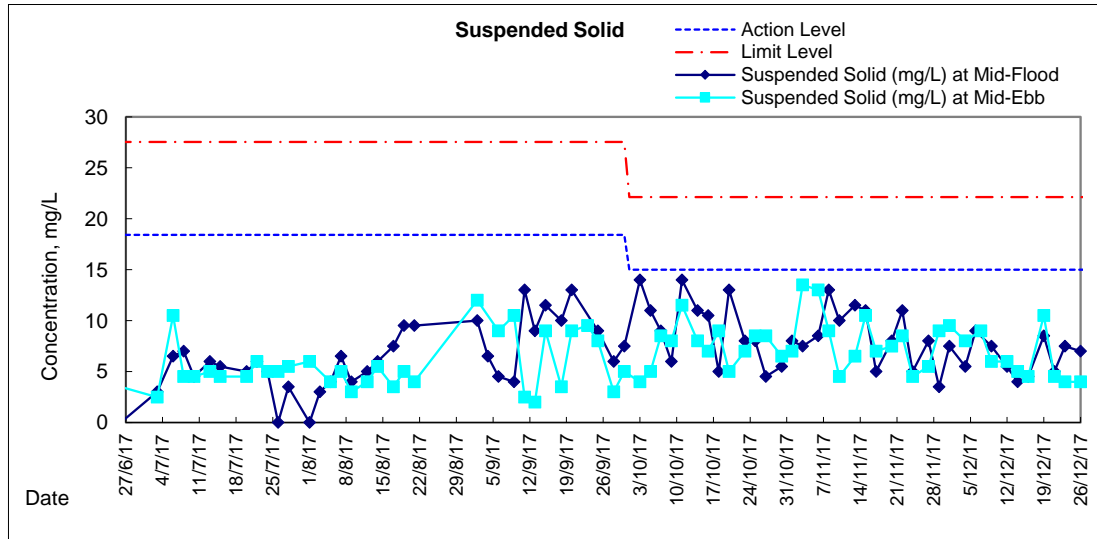
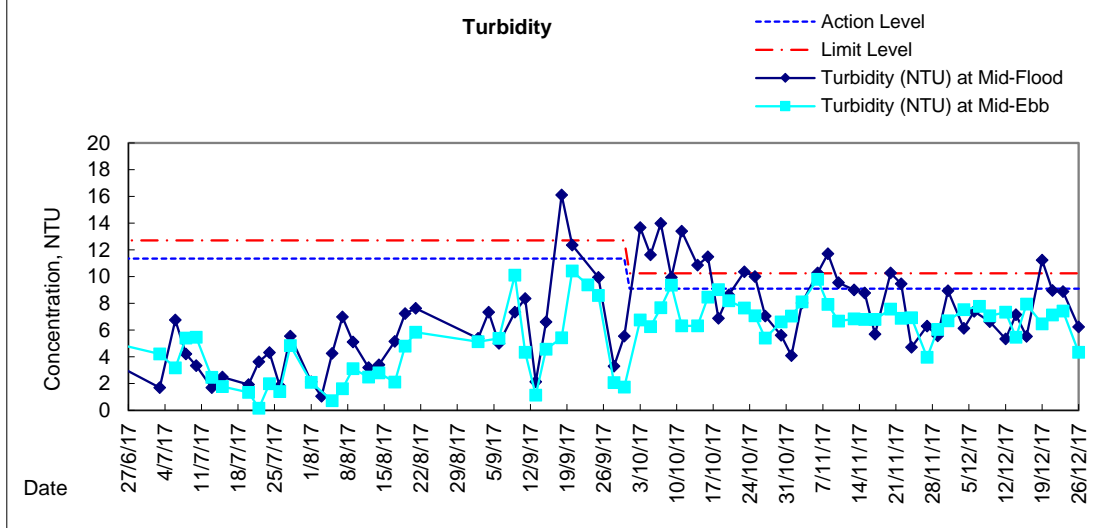
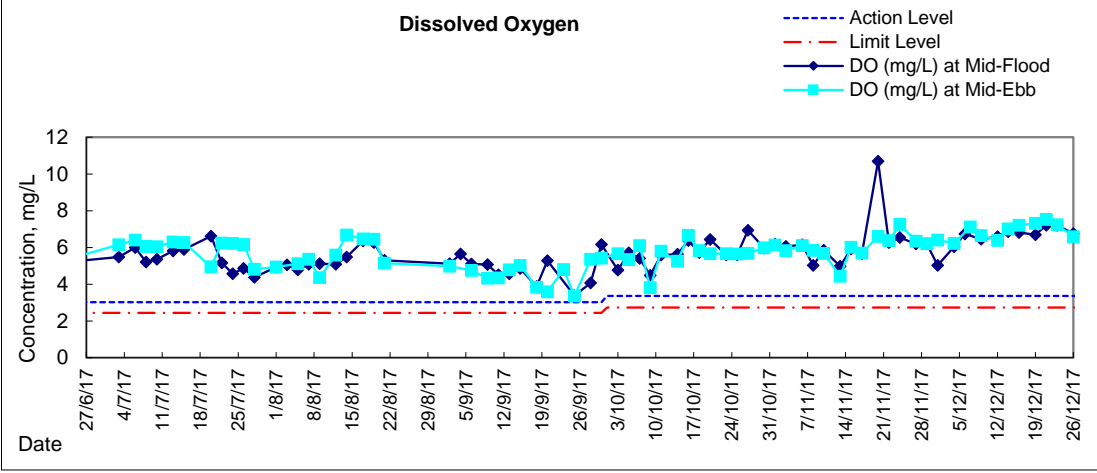


# Graphic Presentation of Water Quality Result of WSD19 - Sheung Wan



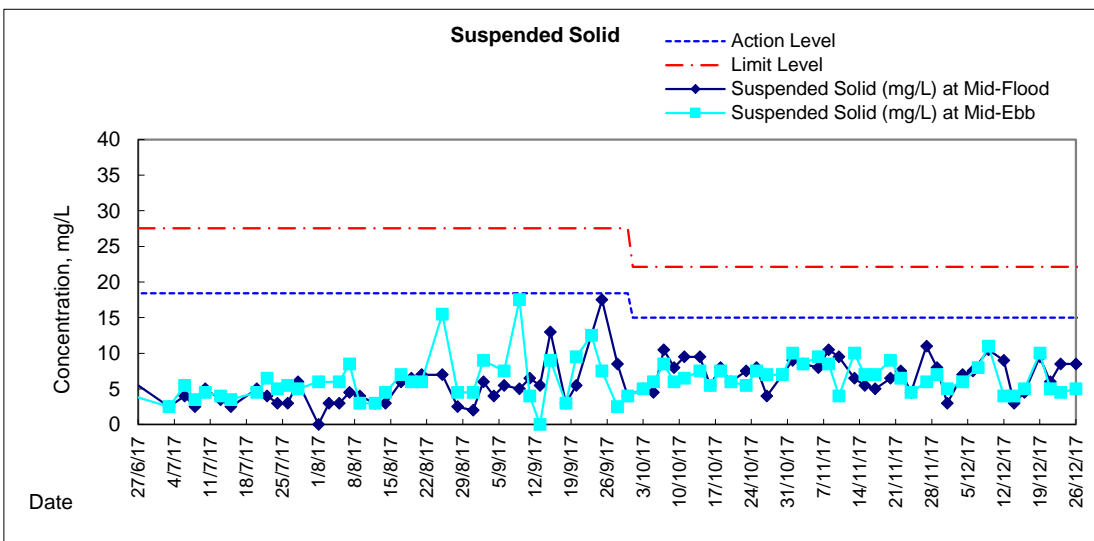
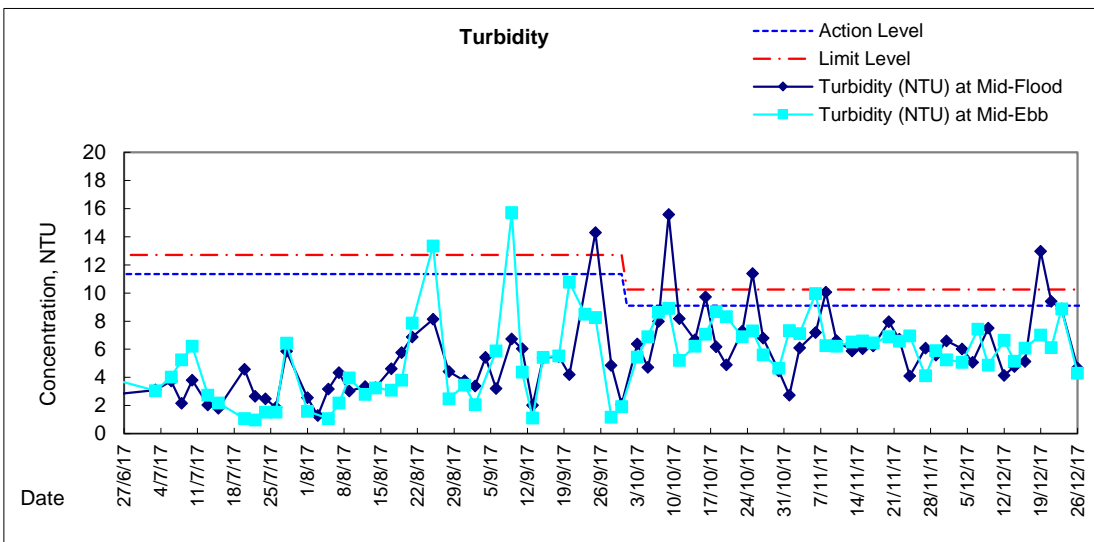
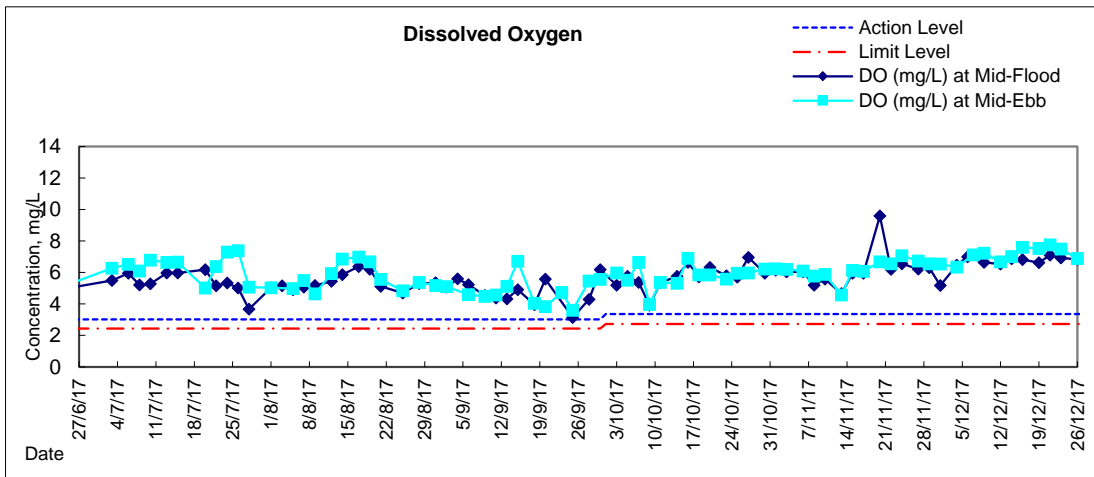


### Graphic Presentation of Water Quality Result of C1 - HKCEC



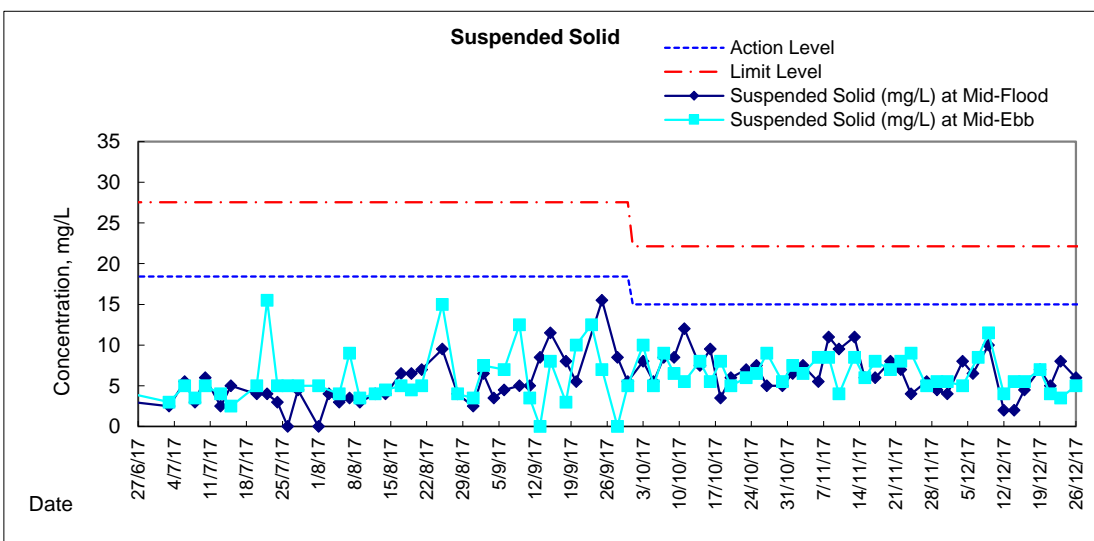
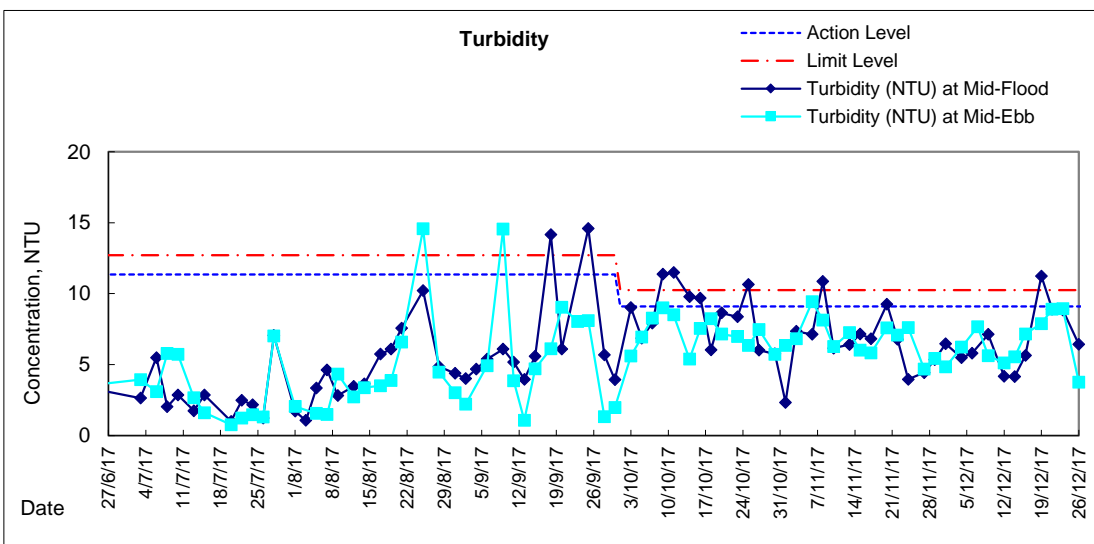
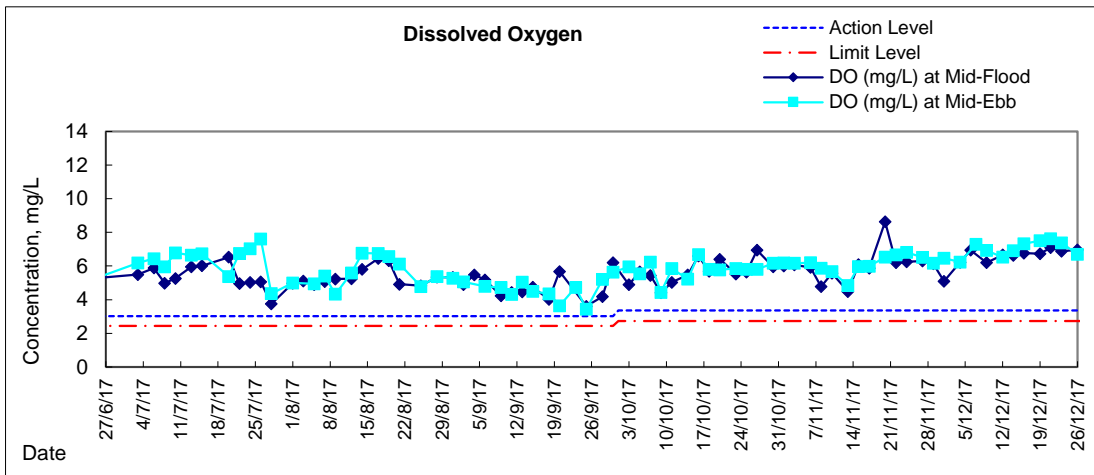


# Graphic Presentation of Water Quality Result of P1 - HKCEC Phase I



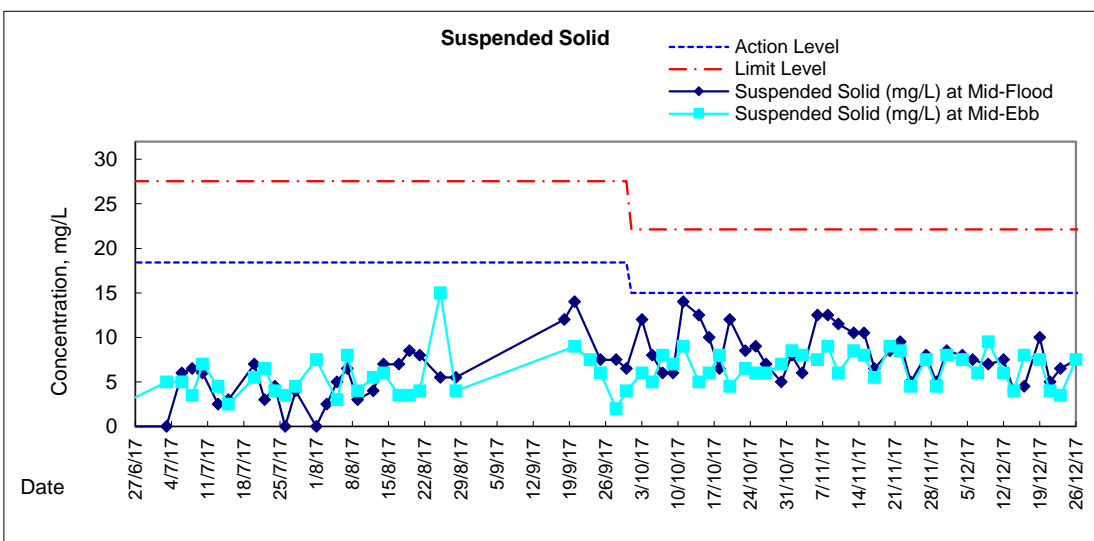
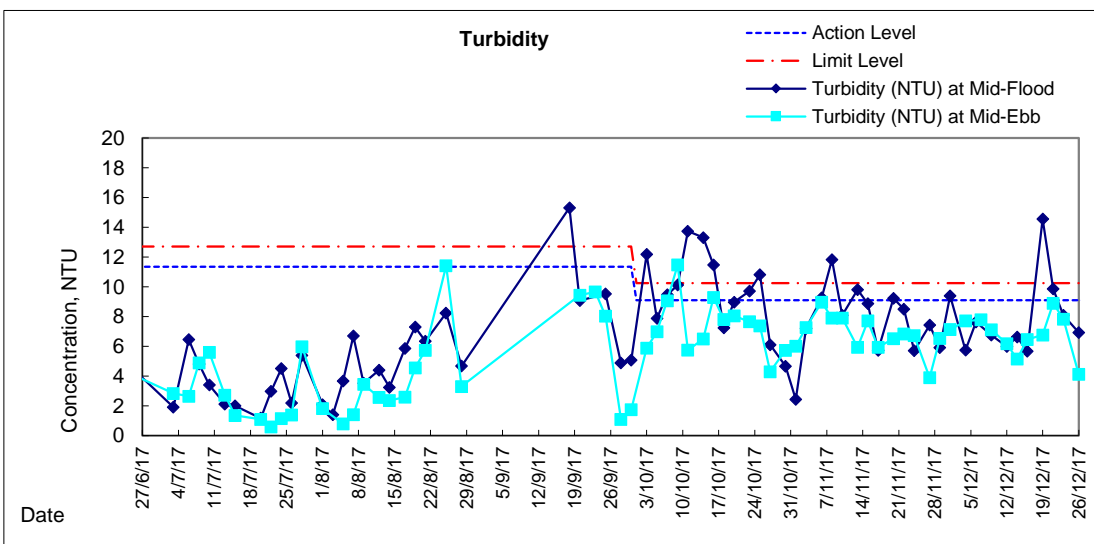
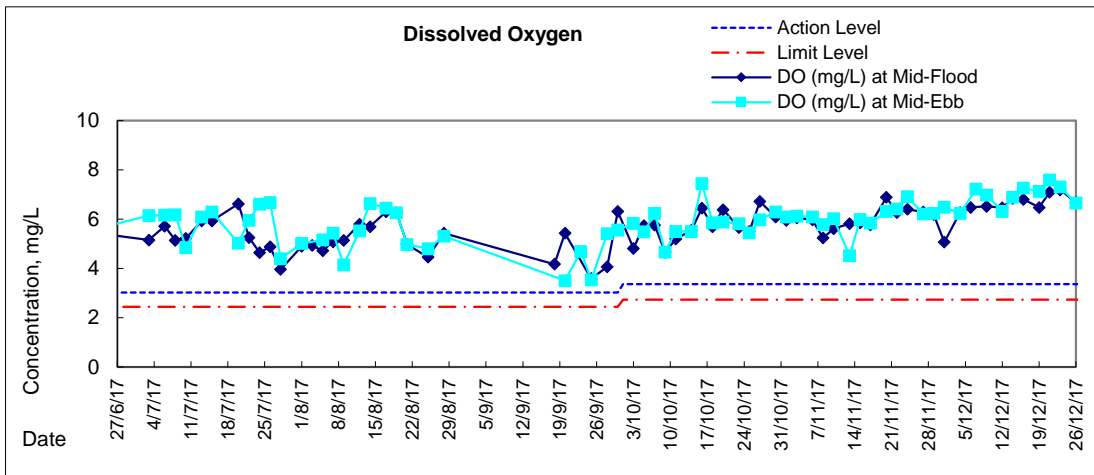


### Graphic Presentation of Water Quality Result of P3 - APA



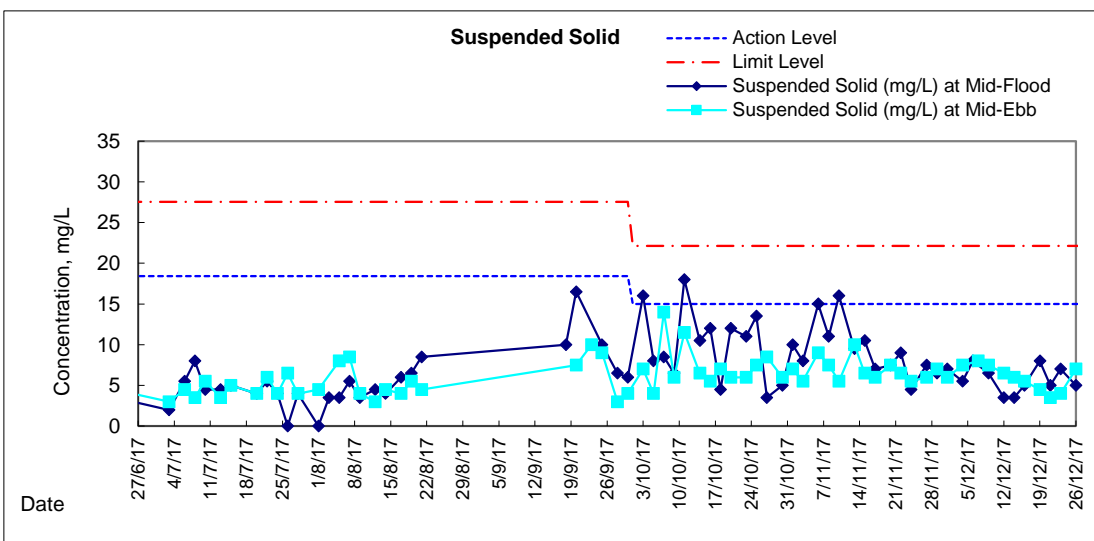
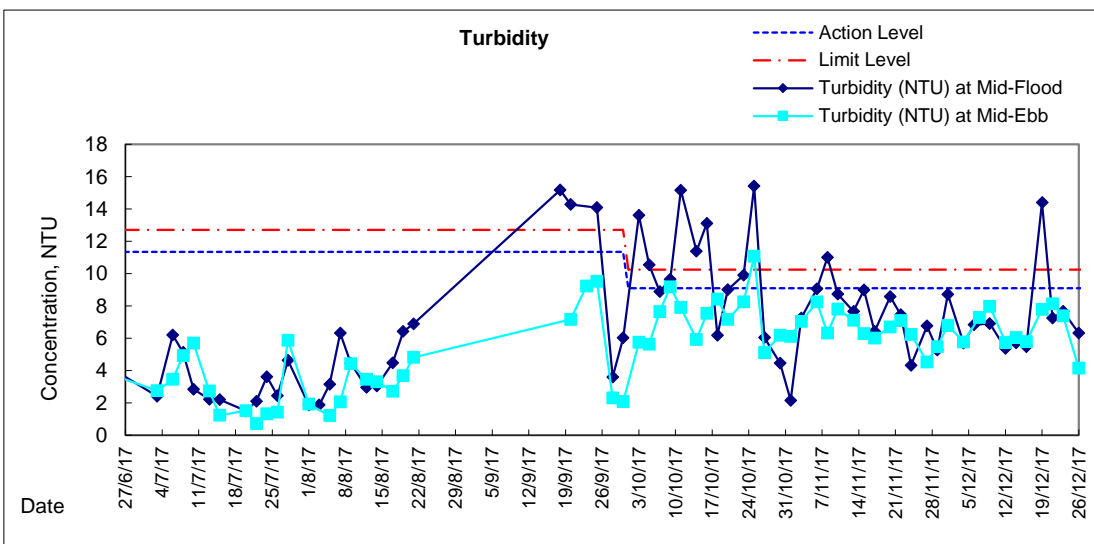
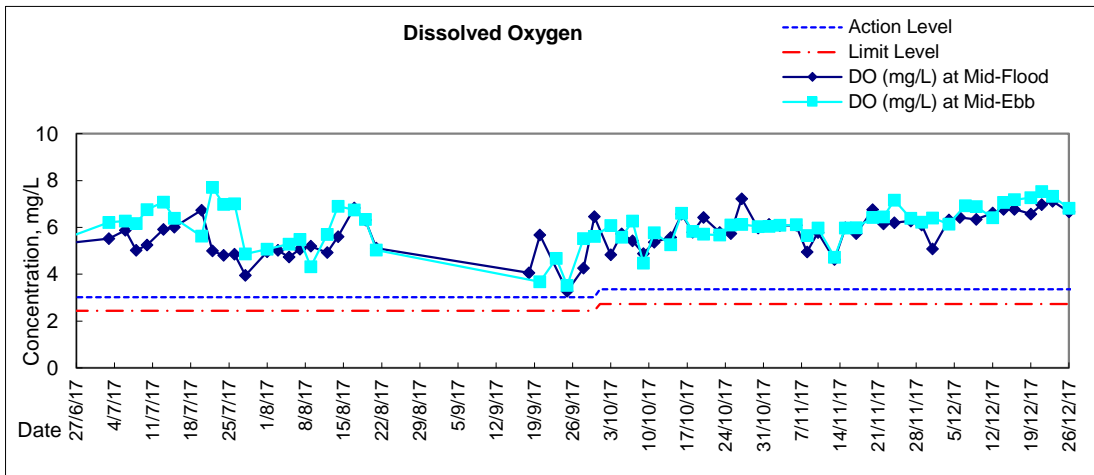


### Graphic Presentation of Water Quality Result of P5 - WCT / RT / IT



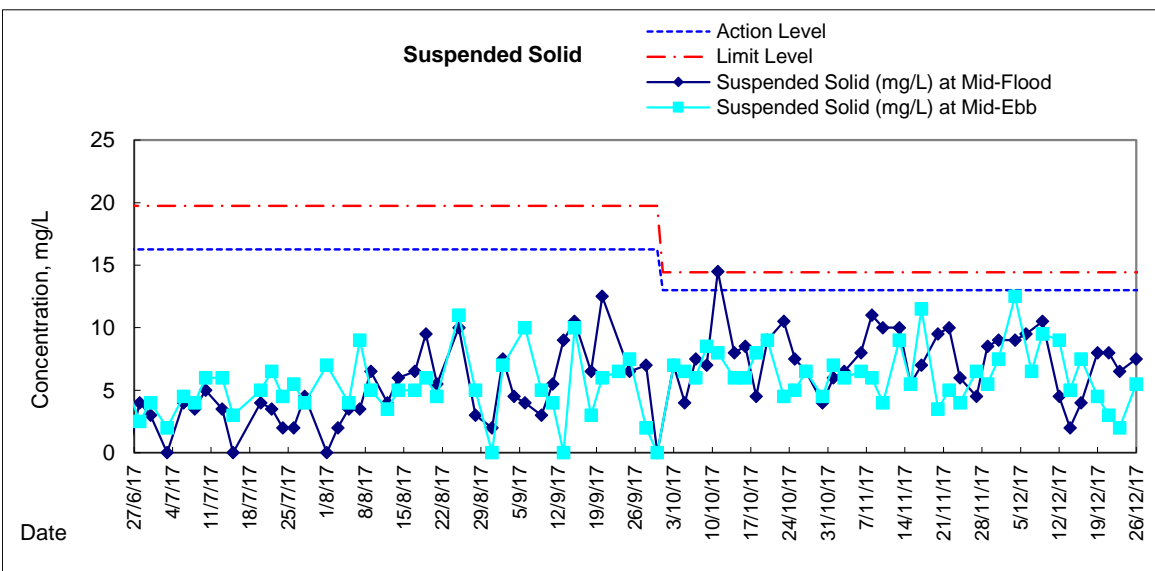
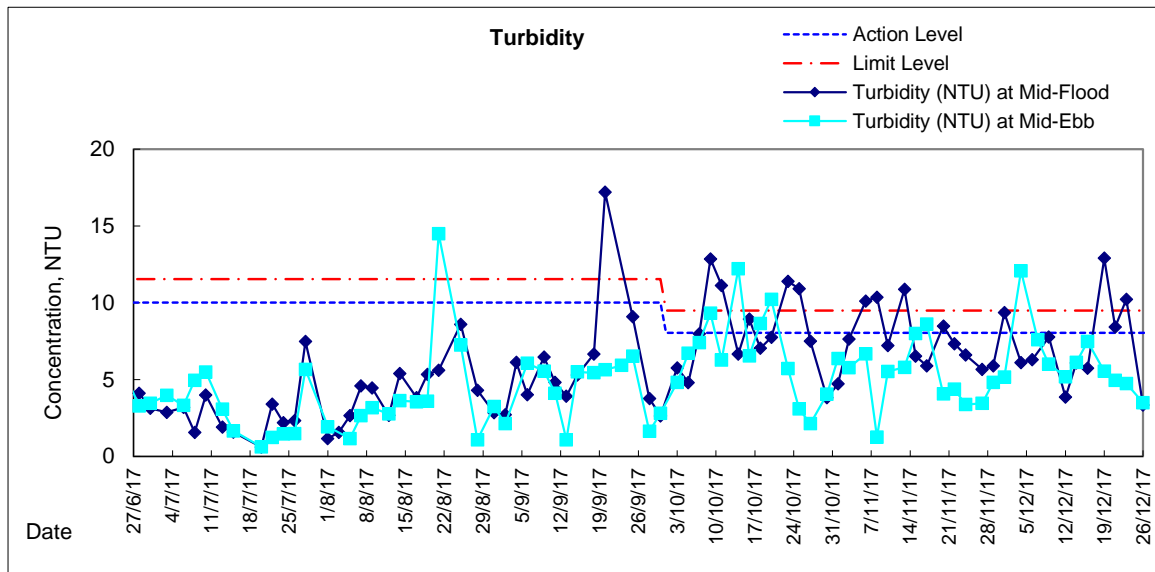
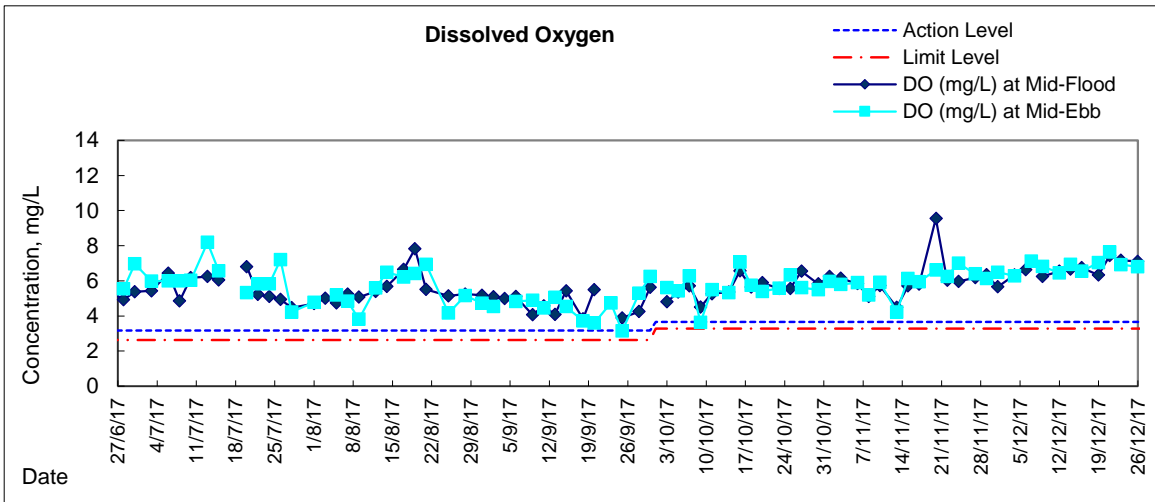


### Graphic Presentation of Water Quality Result of P4 - SOC



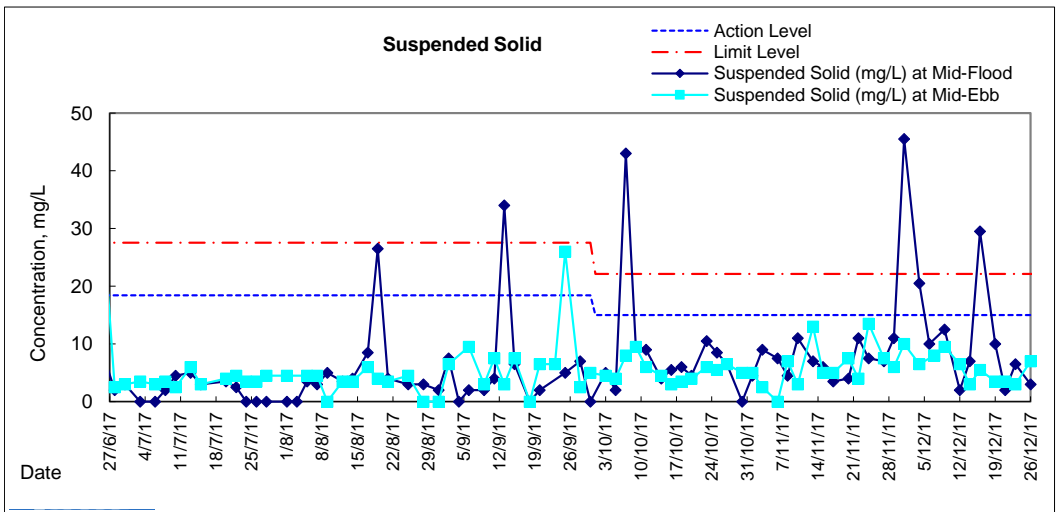
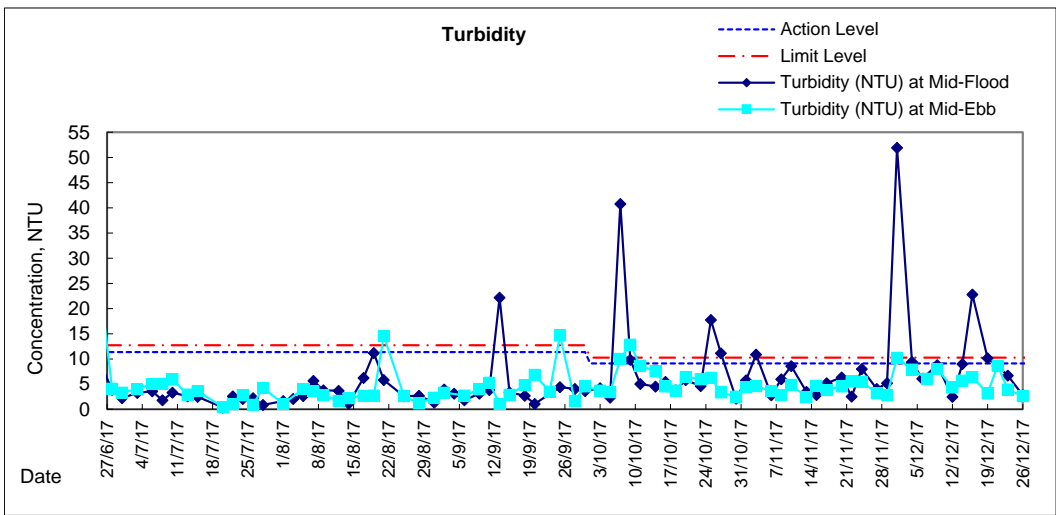
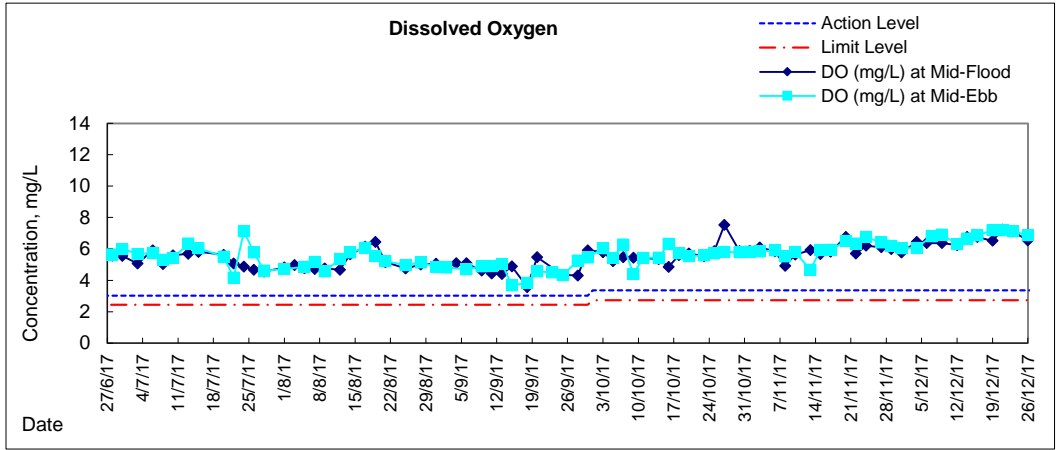


# Graphic Presentation of Water Quality Result of RW21-P789 - GEC/CRC/SHK





# Graphic Presentation of Water Quality Result of C7 - Windsor House











### Graphic Presentation of Enhanced Water Monitoring Results (DO) at C6 - Excelsior Hotel

